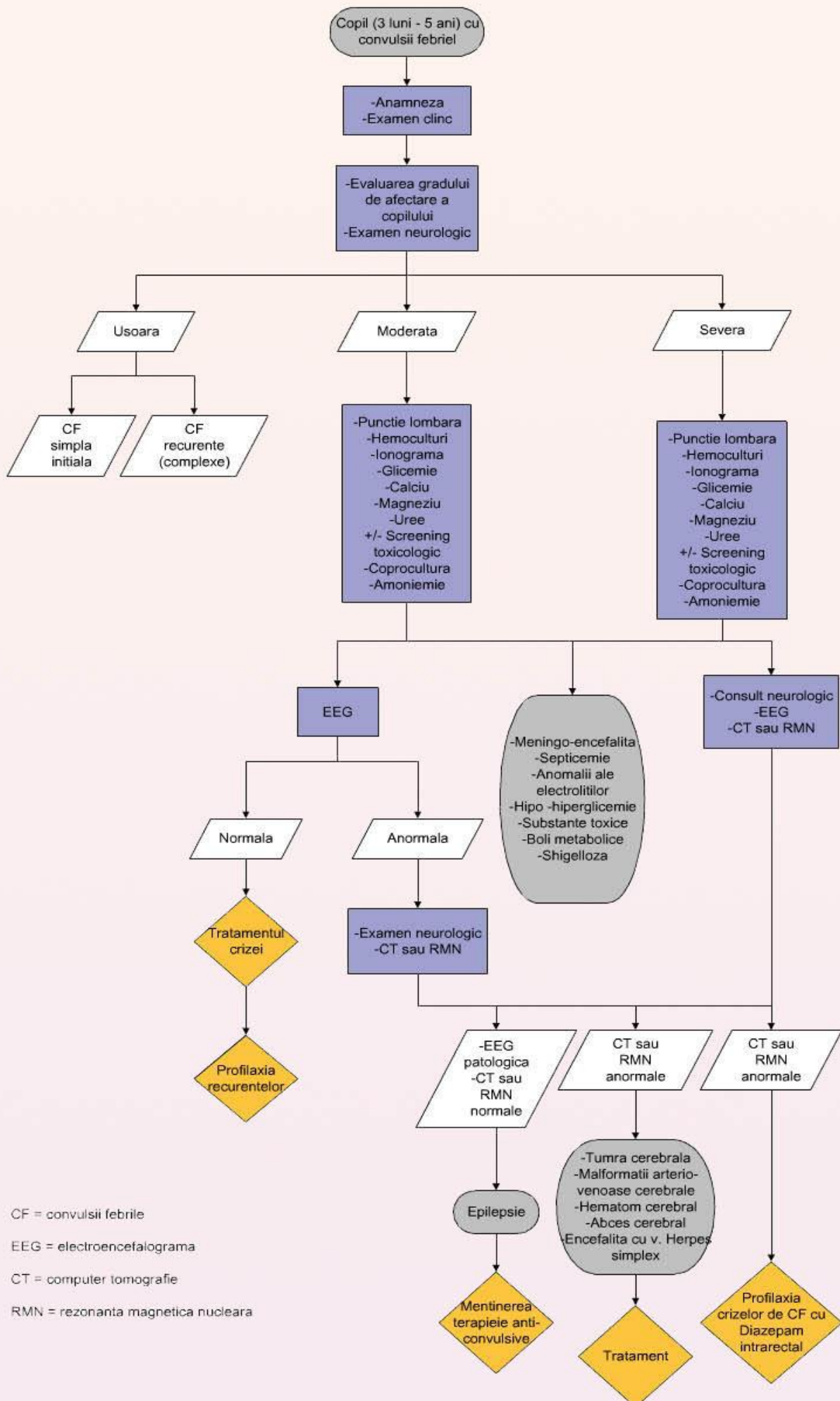
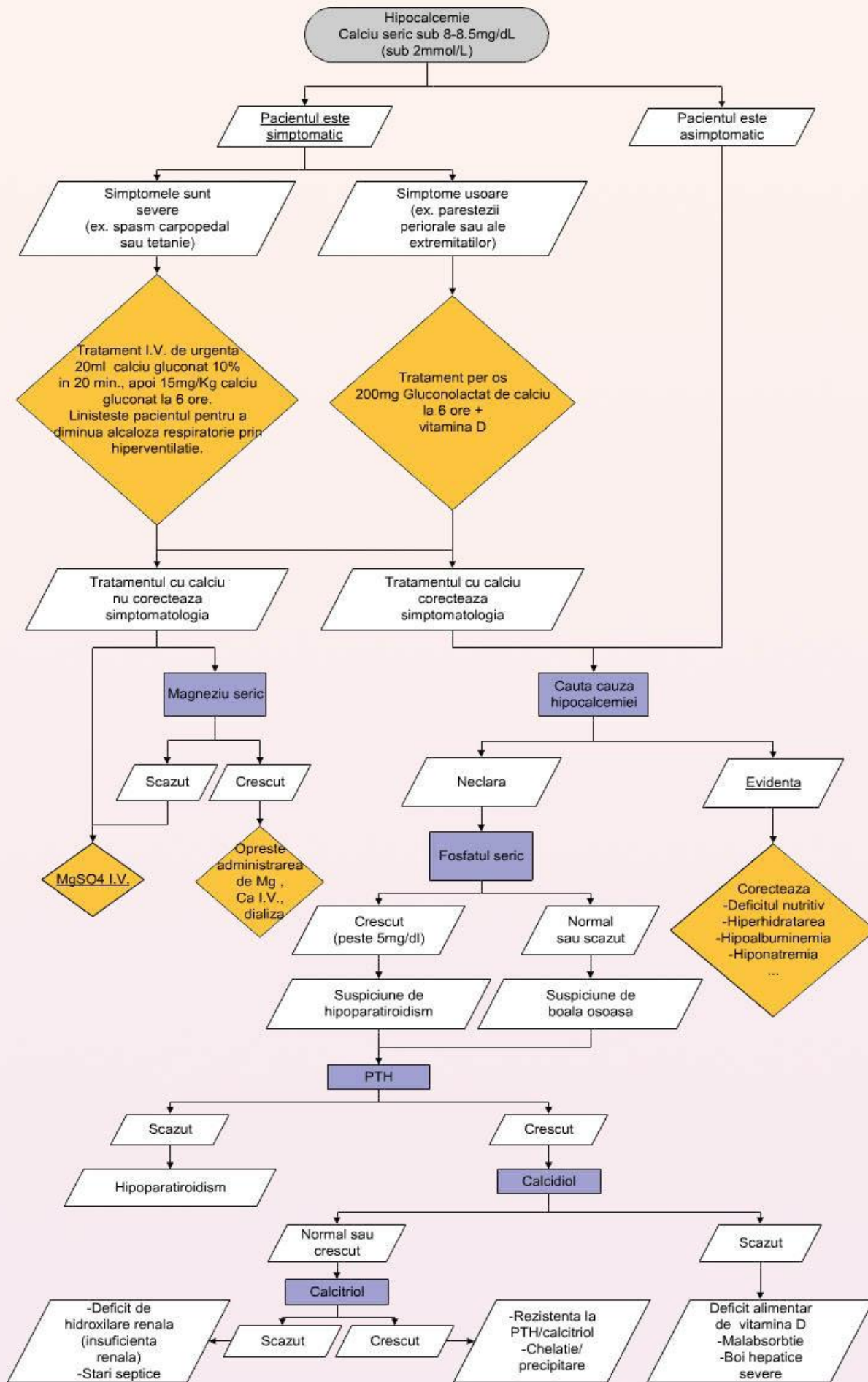


(094-A) Convulsiile febrile la copil

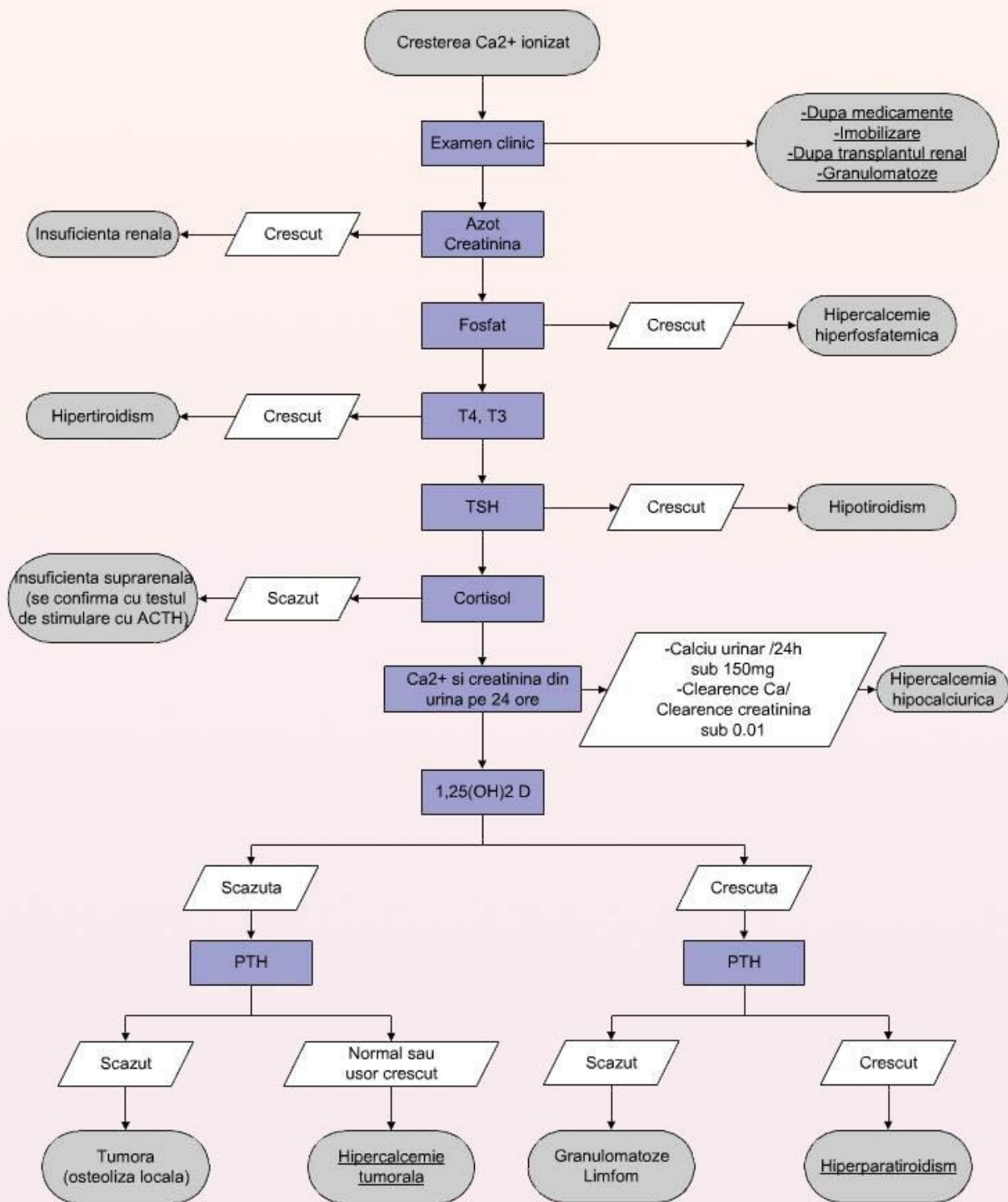


CF = convulsii febrile
 EEG = electroencefalograma
 CT = computer tomografie
 RMN = rezonanta magnetica nucleara

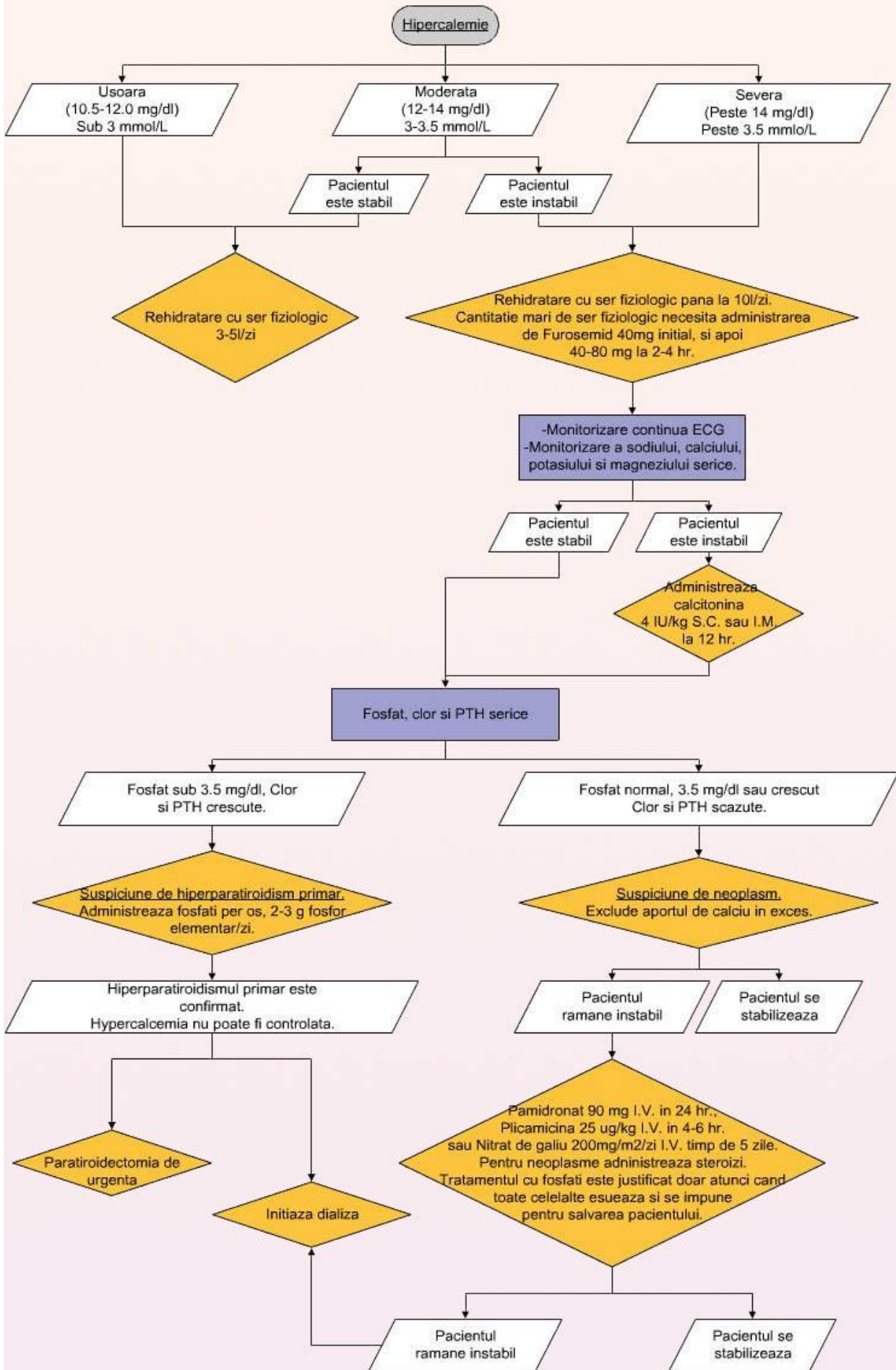
(004-A) Hipocalcemia. Diagnostic si tratament.



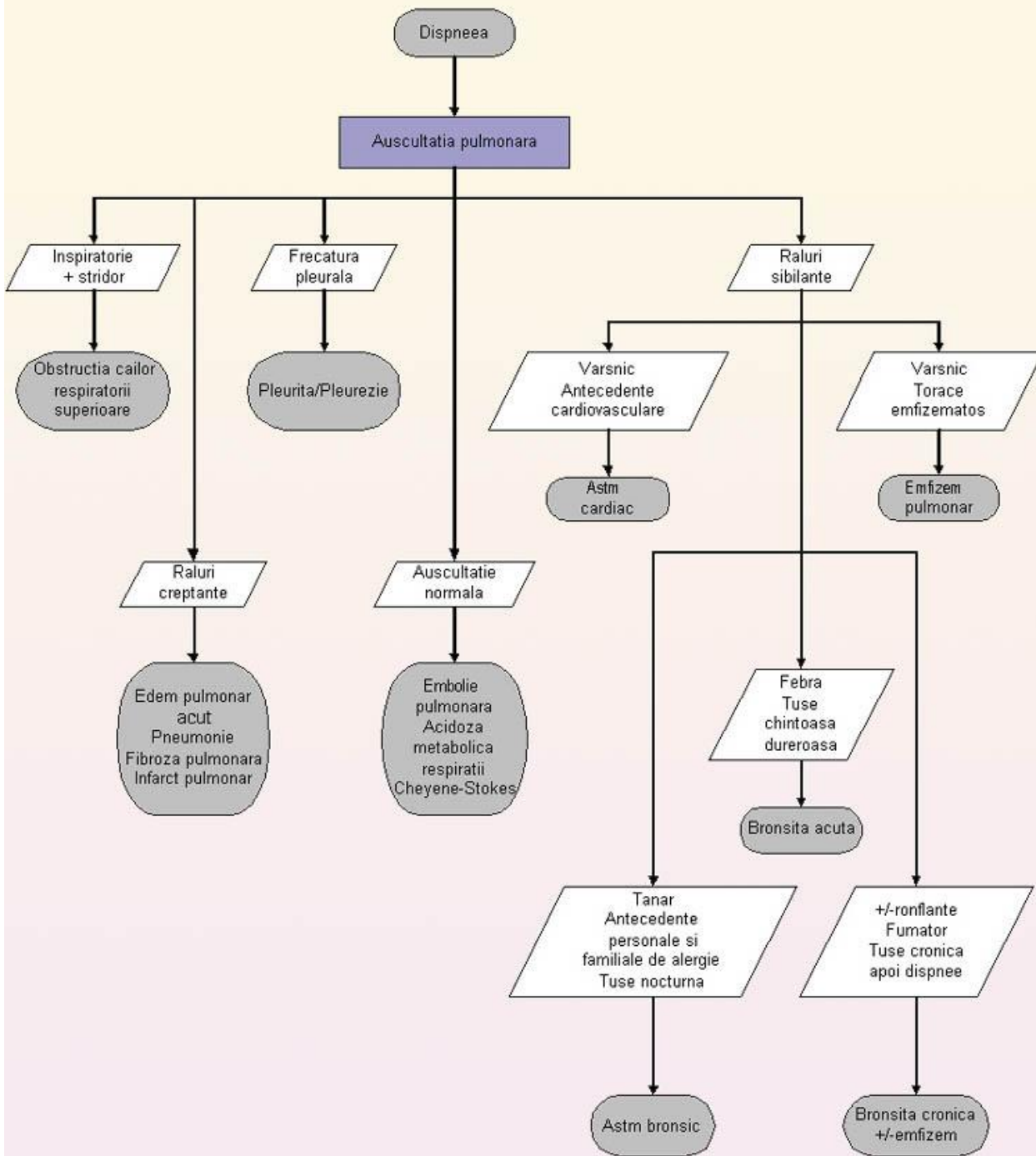
(004-B) Hipercalcemia. Diagnostic



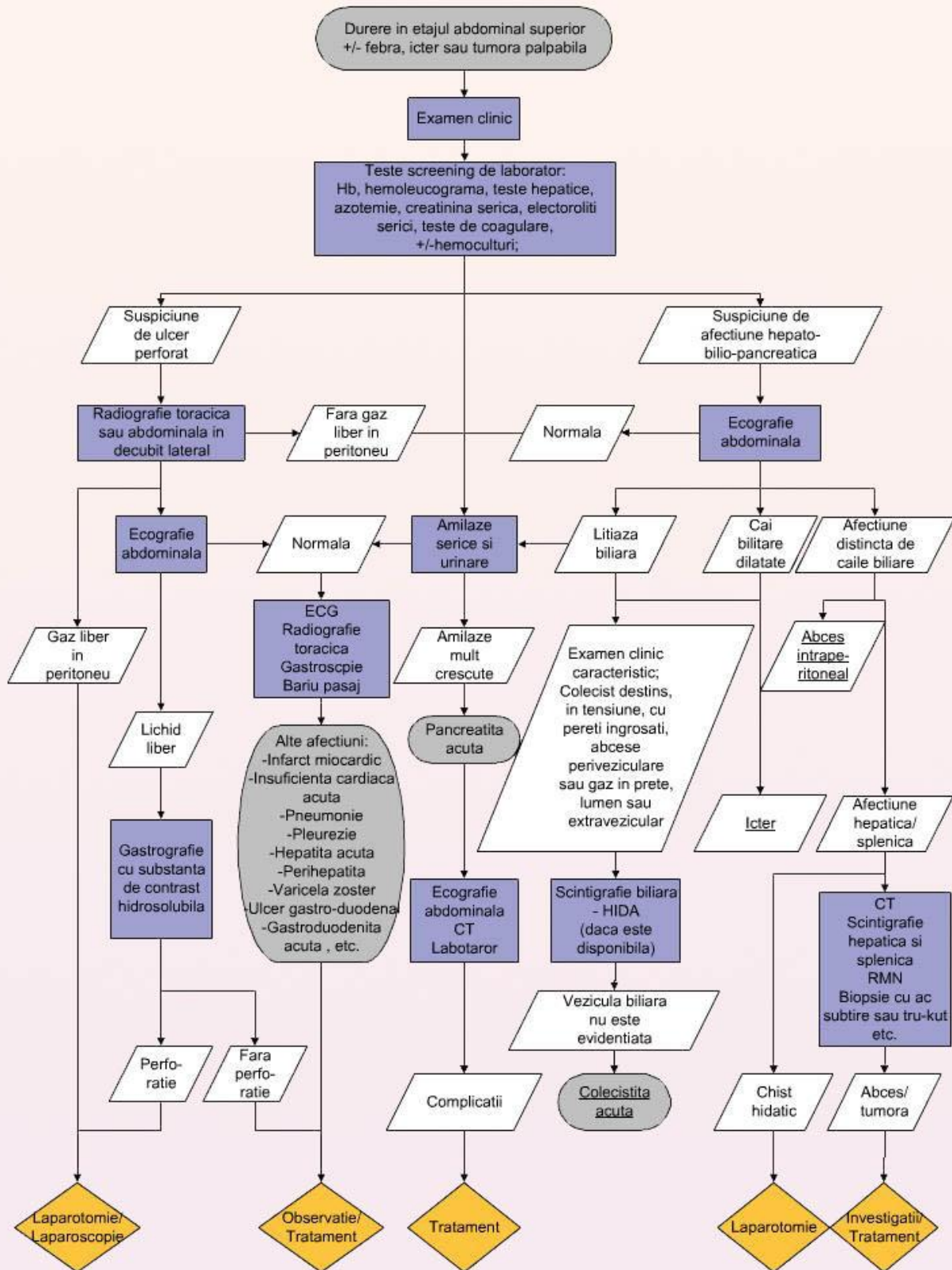
(004-C) Hipercalcemia. Tratament



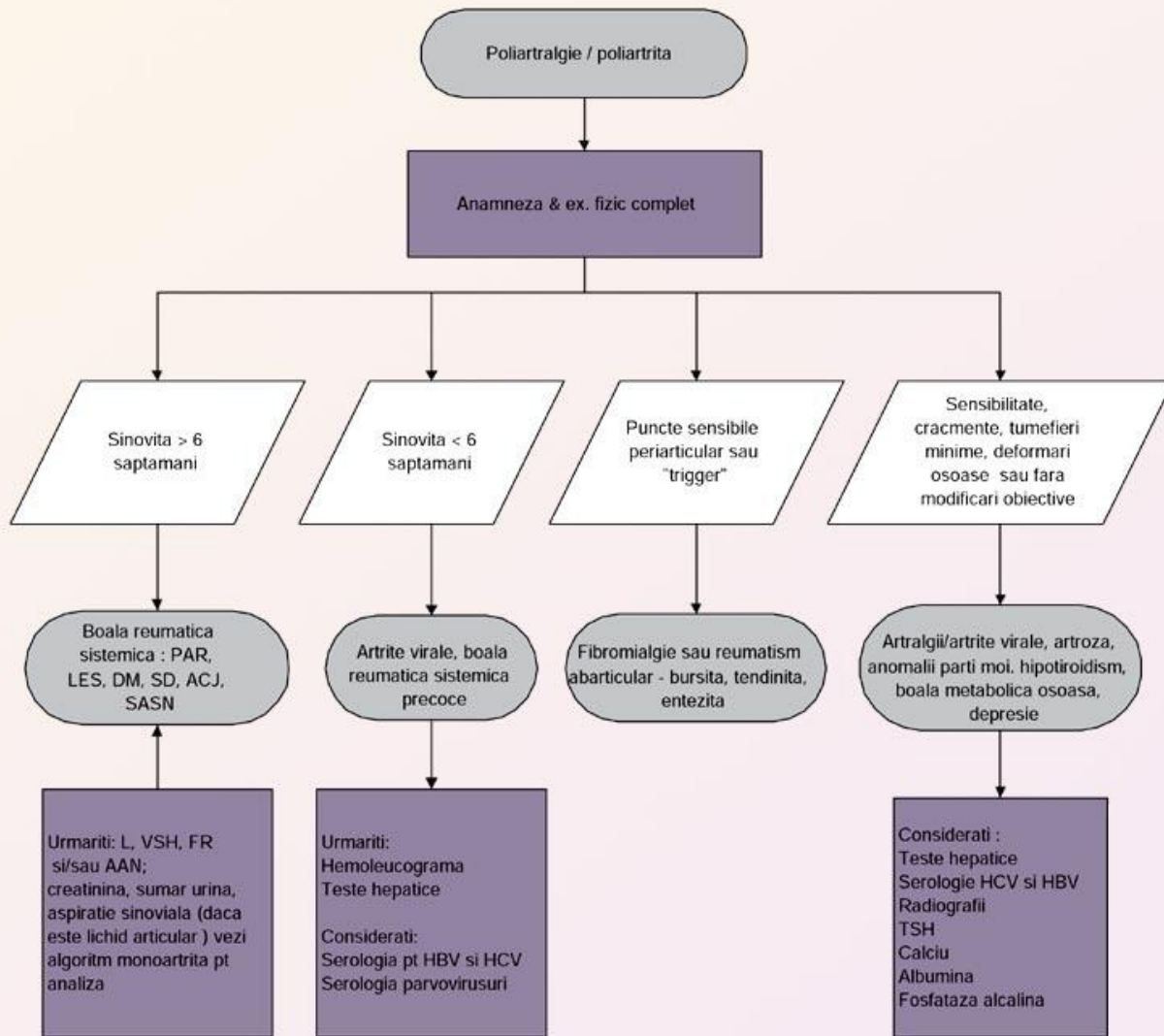
(032-B) Dispneea



(003 C) Durerea acuta in etajul abdominal superior



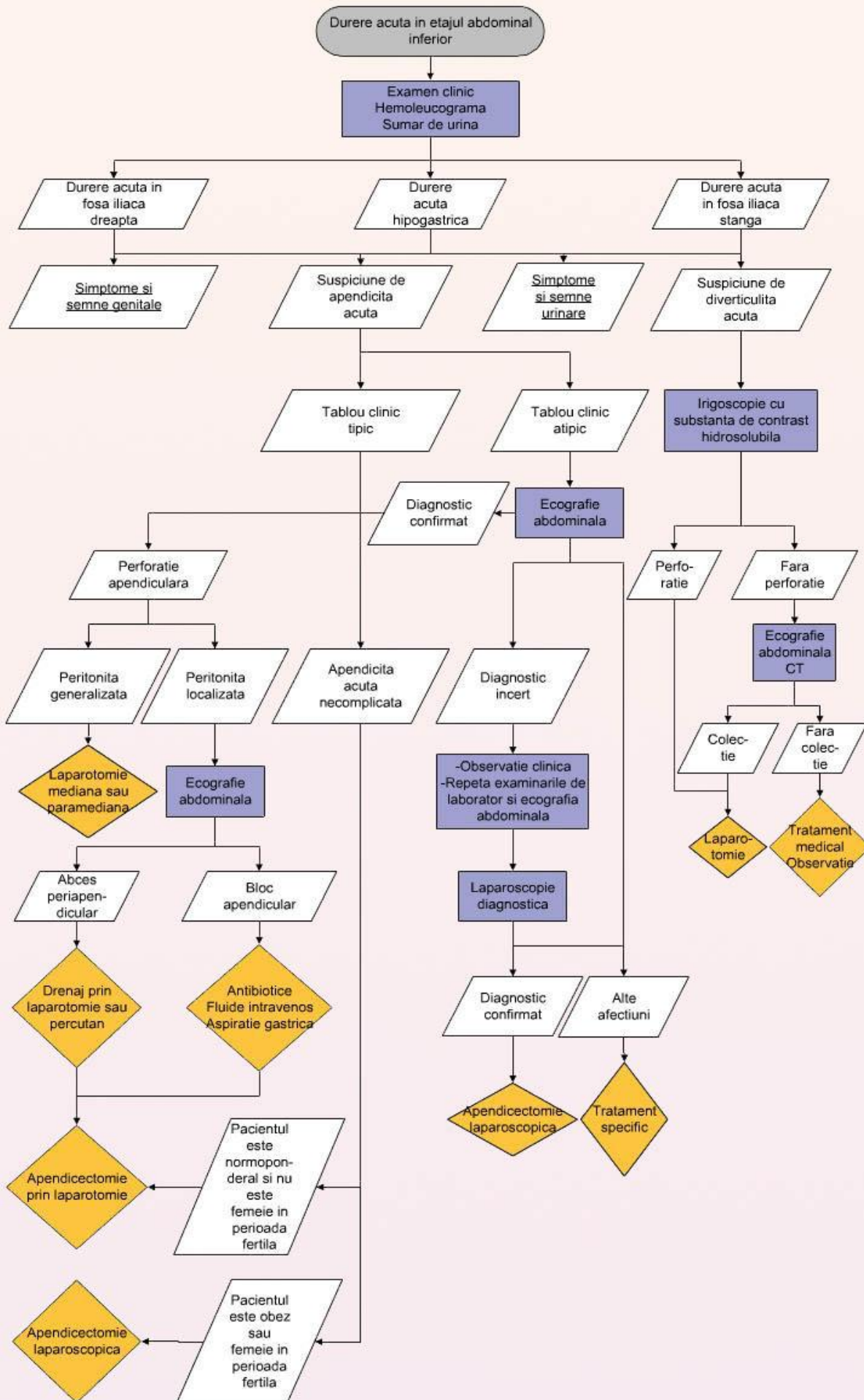
(059-A) Poliartrita- Evaluare initiala



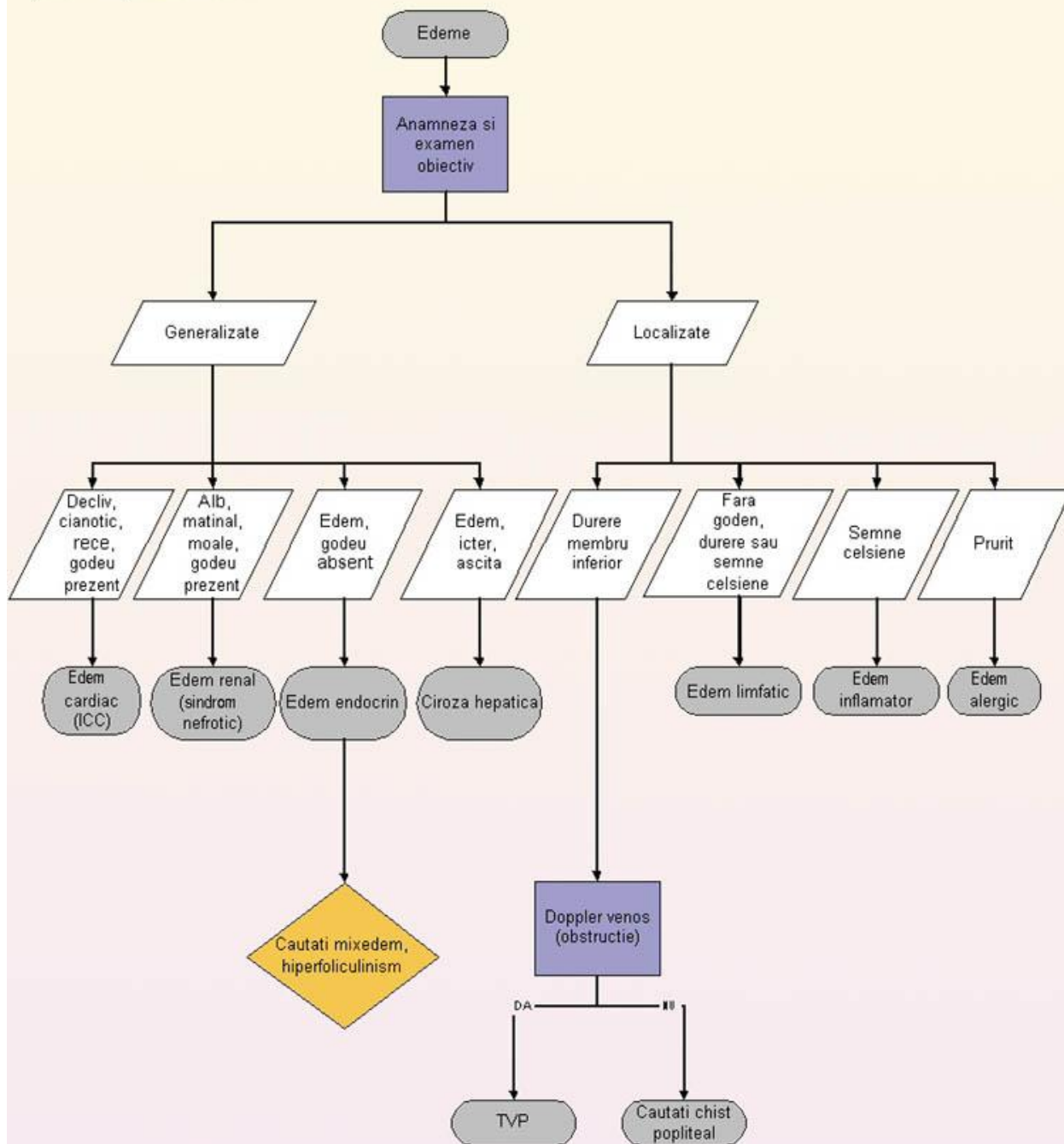
Prescurtari:

American College of Rheumatology (ACR), anticorpi antinucleari (AAN), artrita cronica juvenila (ACJ), factor reumatoid (FR), virus hepatic B (HBV), virus hepatic C (HCV), leucocite (L), lichid sinovial (LS), lupus eritematos sistemic (LES), poliartrita reumatoida (PAR), polimorfonucleare (PMN), spondilartropatie seronegativa (SASN), timp coagulare (TC), timp sangerare (TS)

(003-E) Durerea acuta in etajul abdominal inferior - simptome digestive.



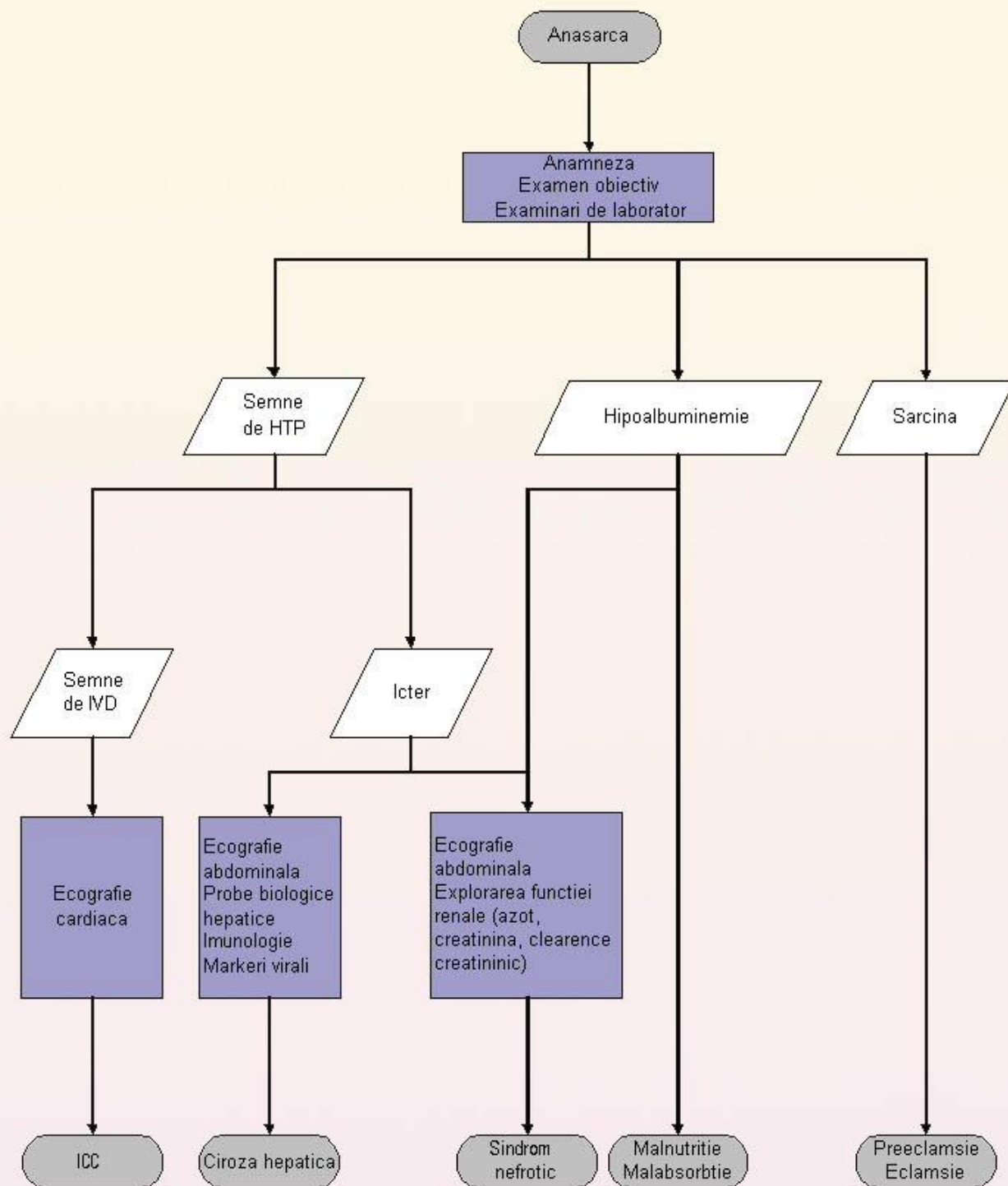
(034-A) Edemele



ICC=insuficienta cardiaca congestiva

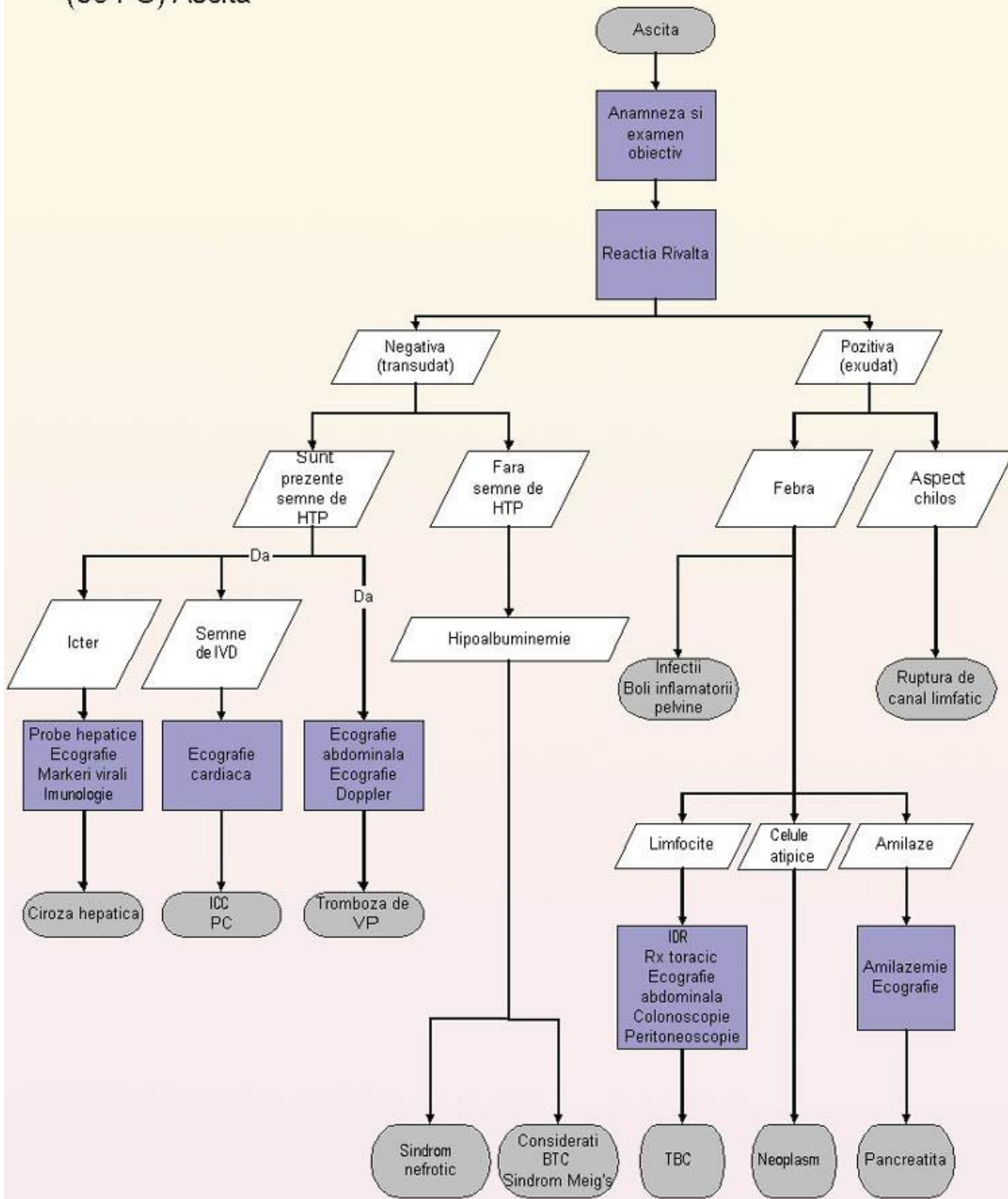
TVP=tromboza venoasa profunda

(034-B) Anasarca



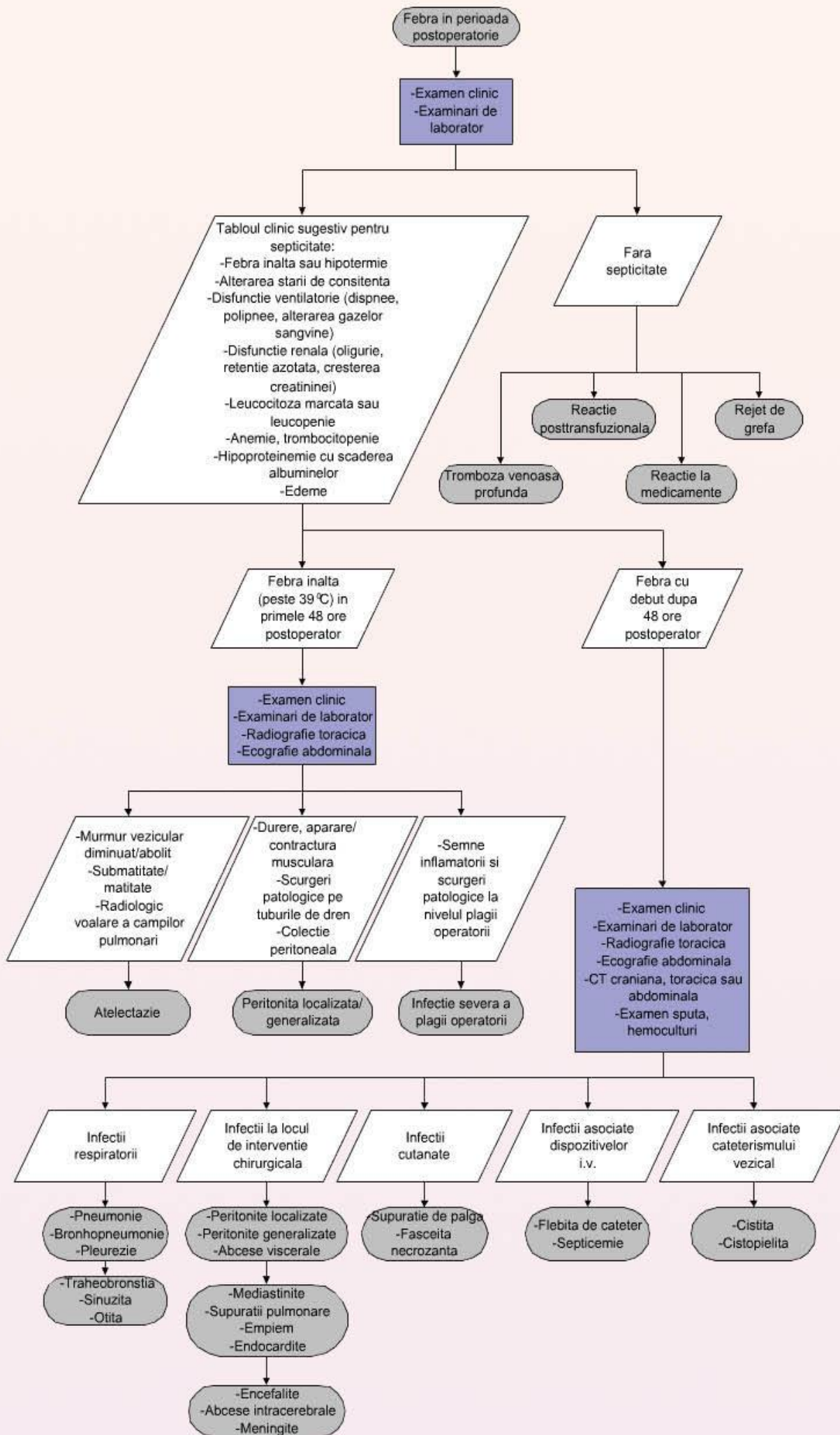
ICC=insuficienta cardiaca congestiva
IVD=insuficienta ventriculara dreapta
HTP=hipertensiune portala ECG electrocardiograma

(034-C) Ascita

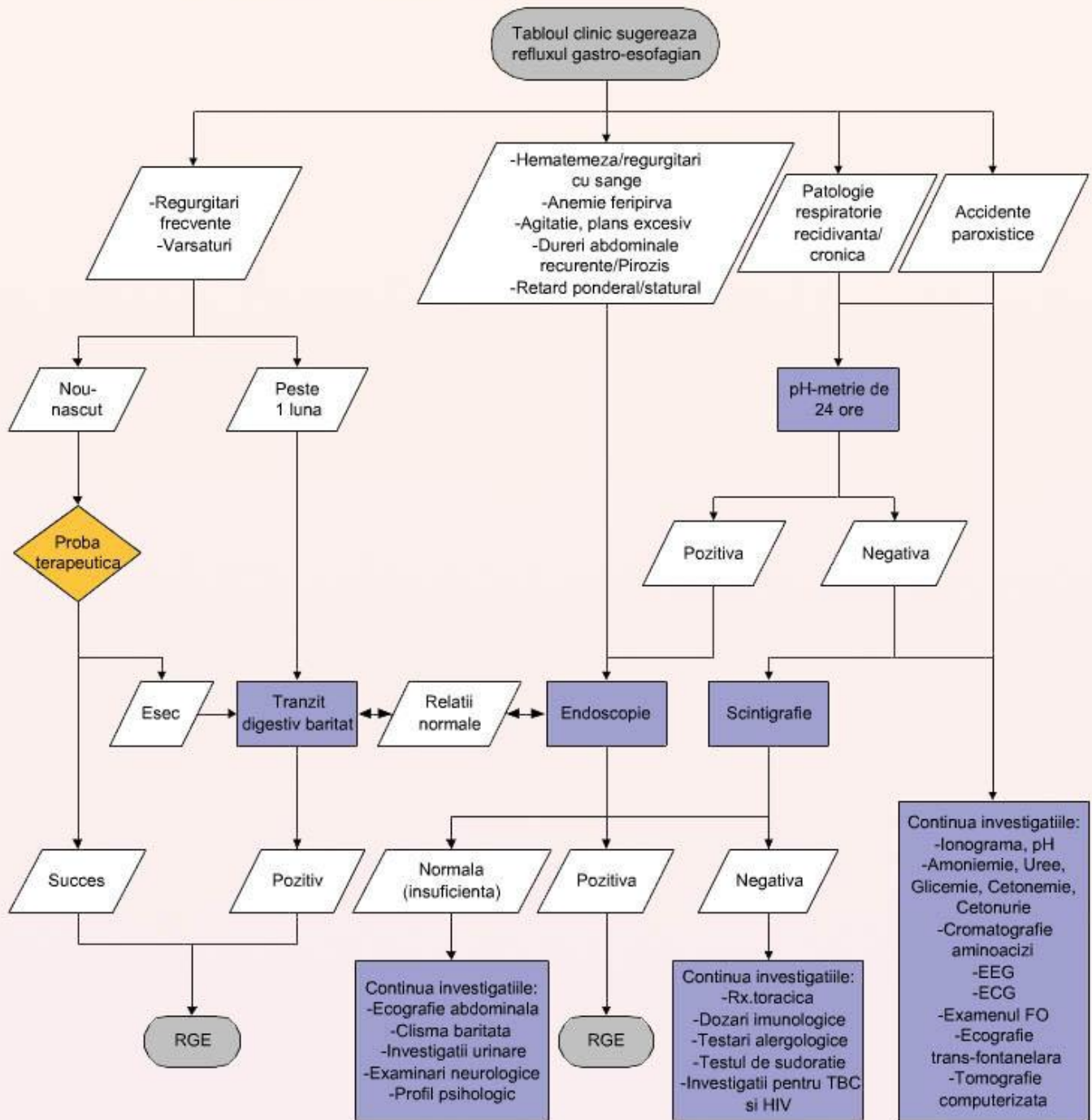


ICC=insuficienta cardiaca congestiva
IVD=insuficienta ventriculara dreapta
PC=pericardita constrictiva
VP=vena porta
BTC=boala de tesut conjunctiv
TBC=tuberculoza
HTP=hipertensiune portala

(040-A) Febra in perioada postoperatorie

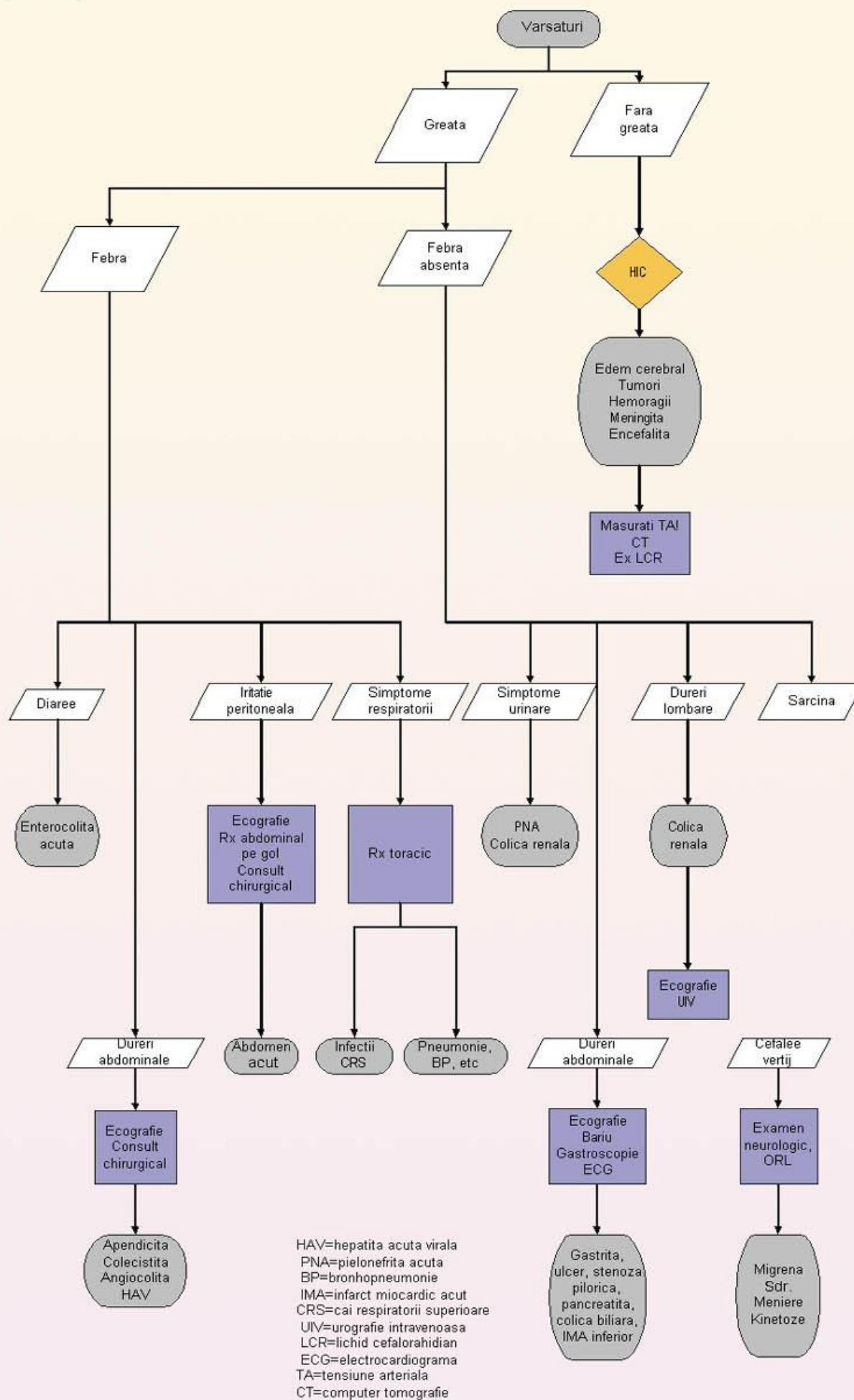


(119-A) Refluxul gastro-esofagian. Diagnostic

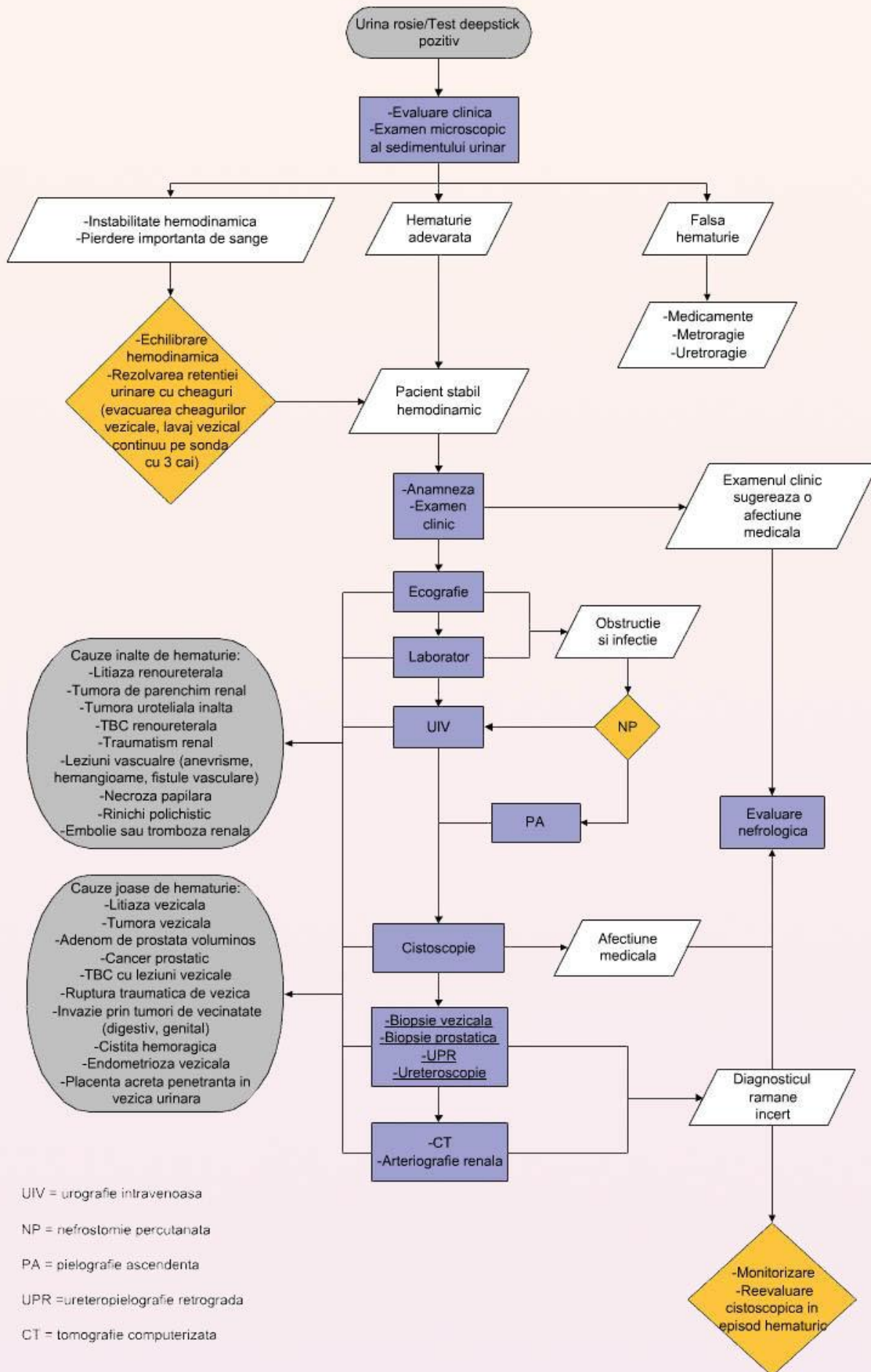


RGE = reflux gastro-esofagian

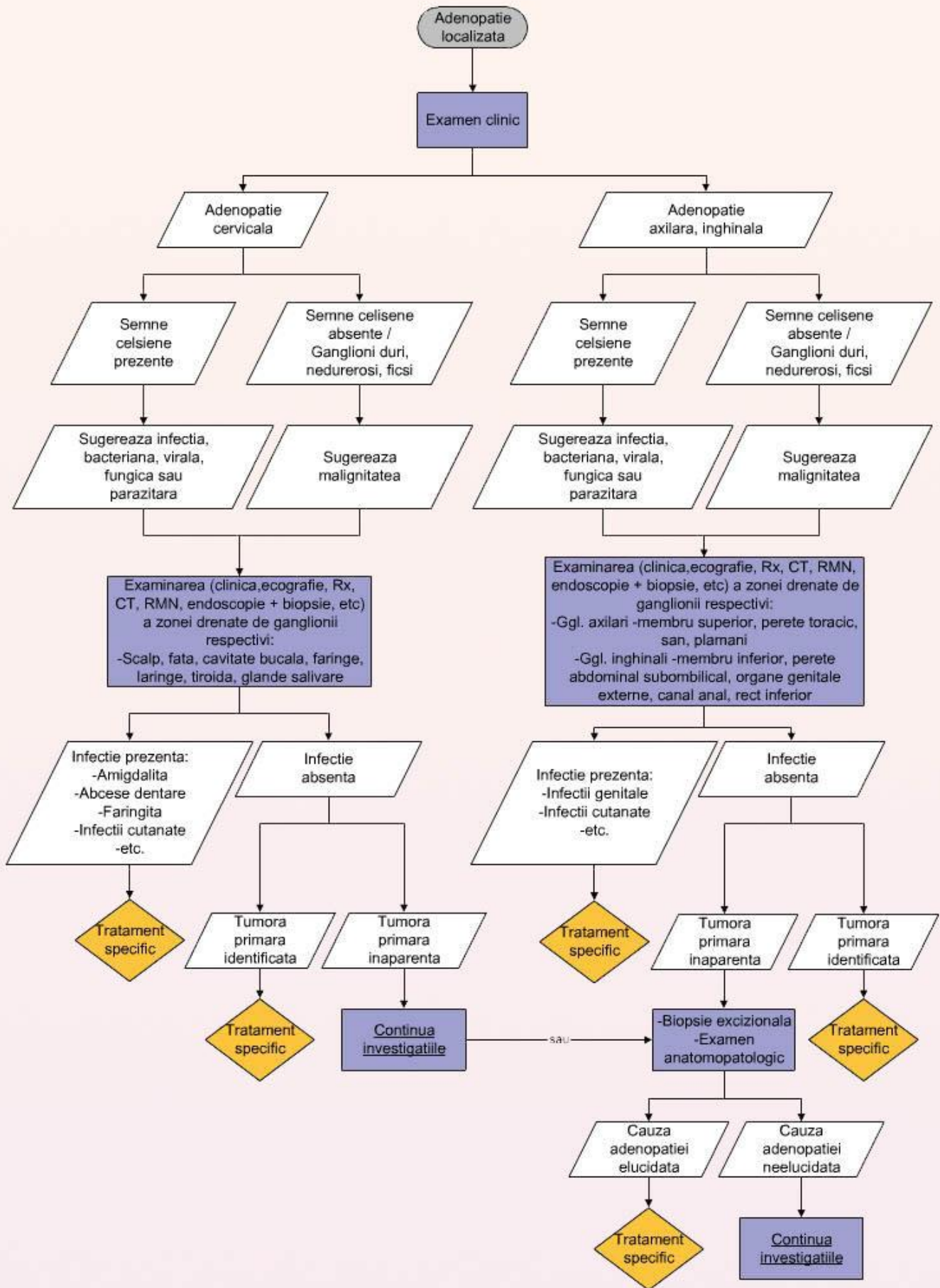
(119-B) Varsaturi



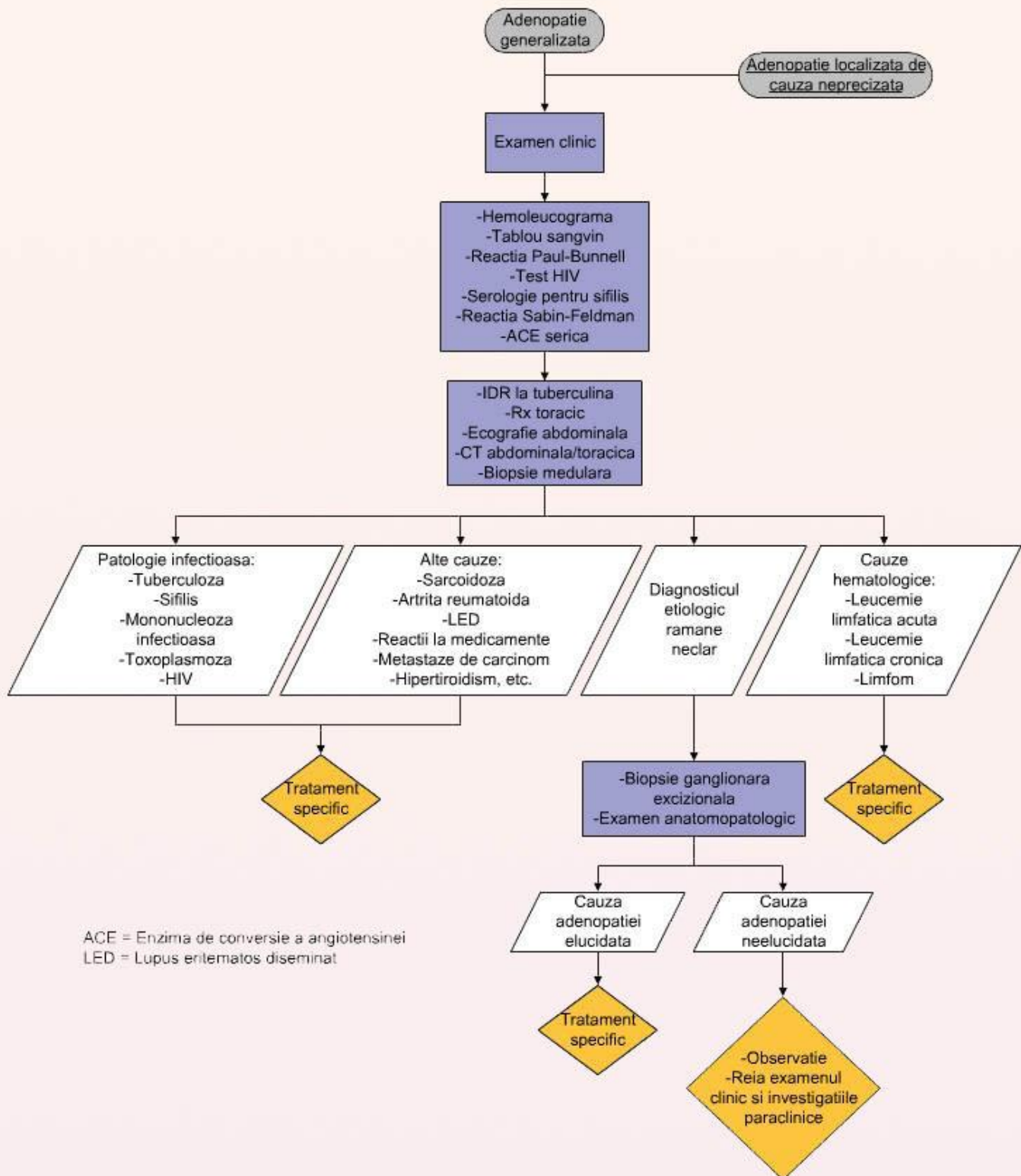
(048-A) Hematuria. Evaluare urologica.



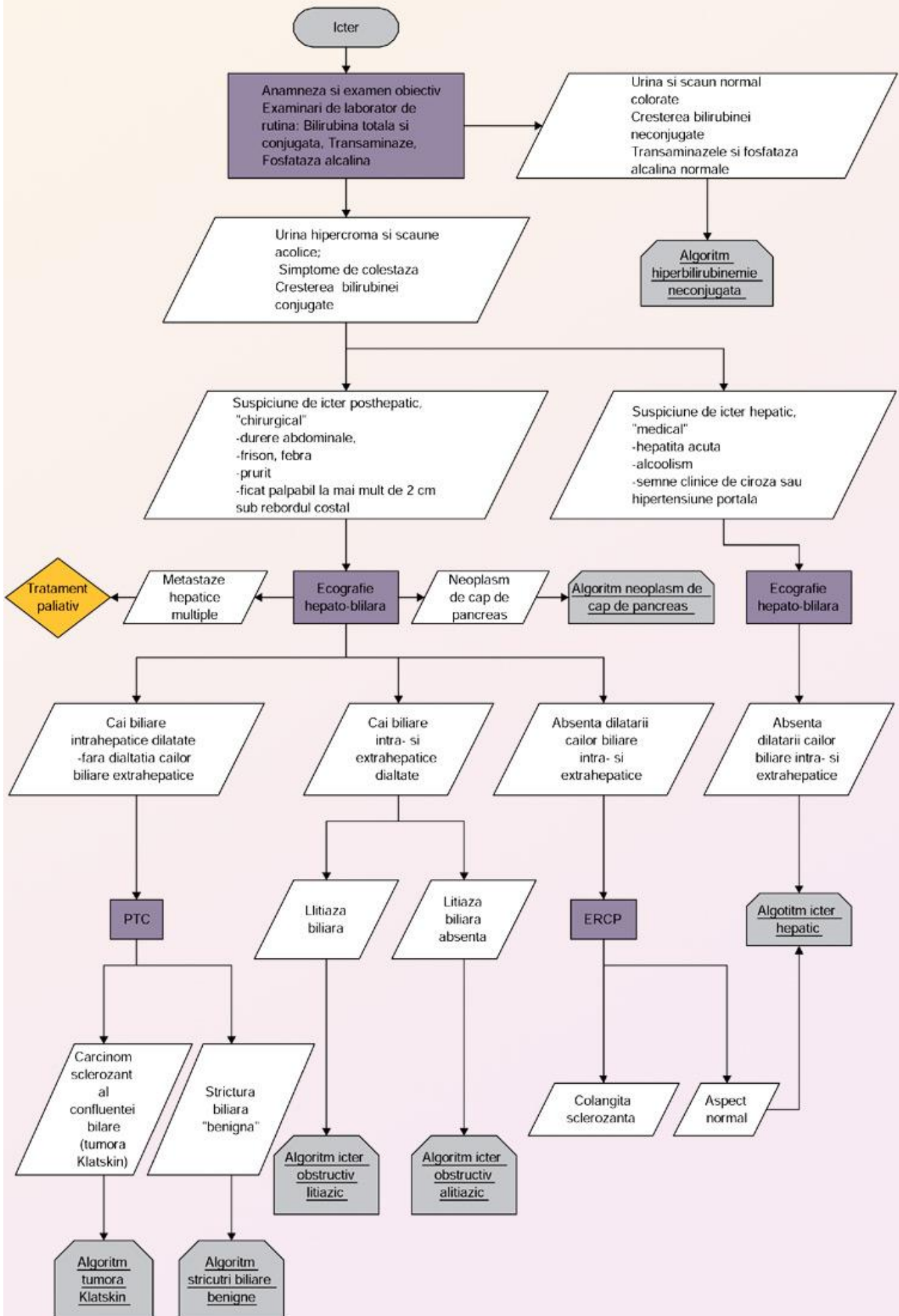
(061-A) Adenopatia localizata



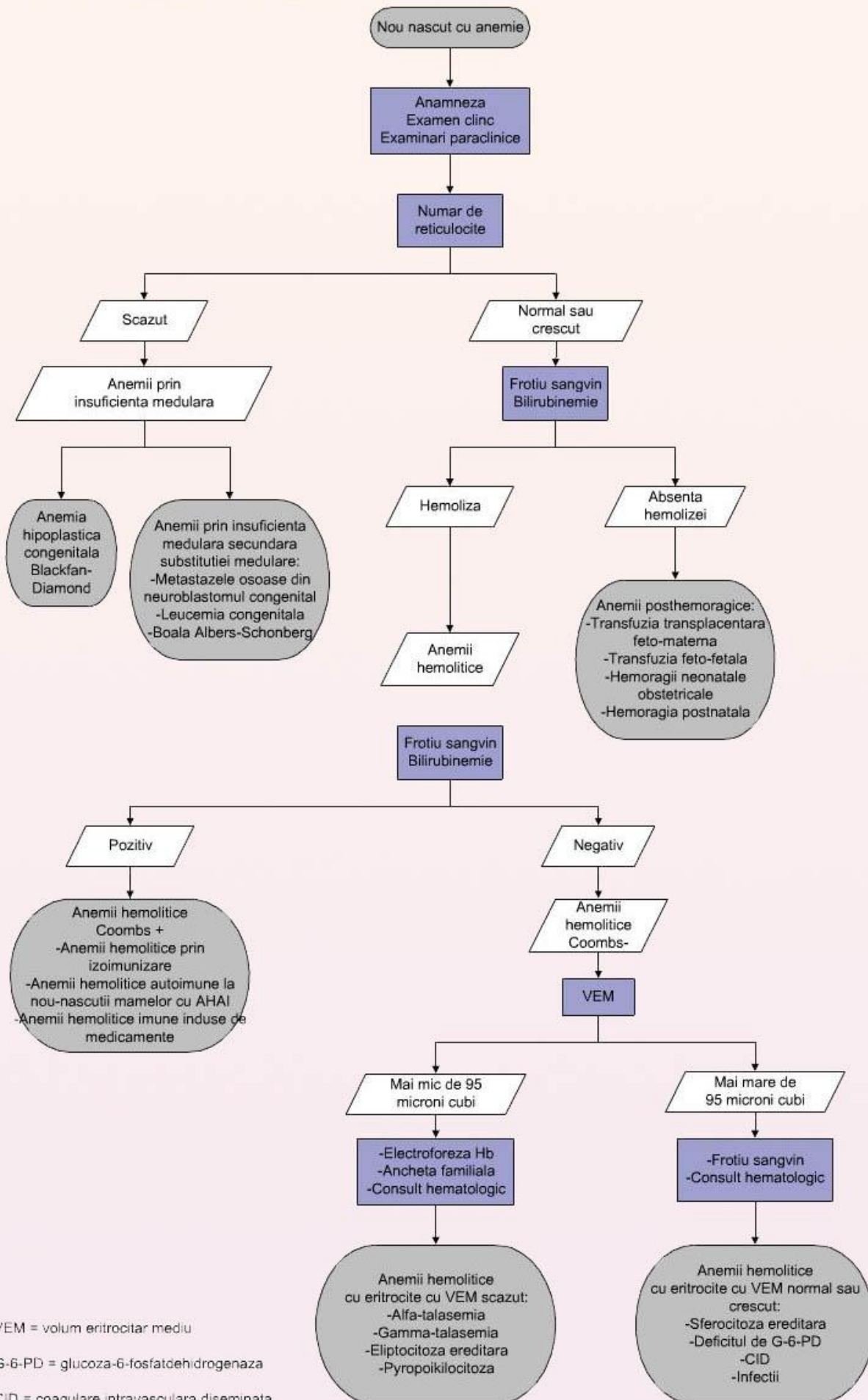
(061-A) Adenopatia generalizata



(057-A) Icterul sclerotegetuntar -Evaluare initiala.



(012-A) Anemia neonatala

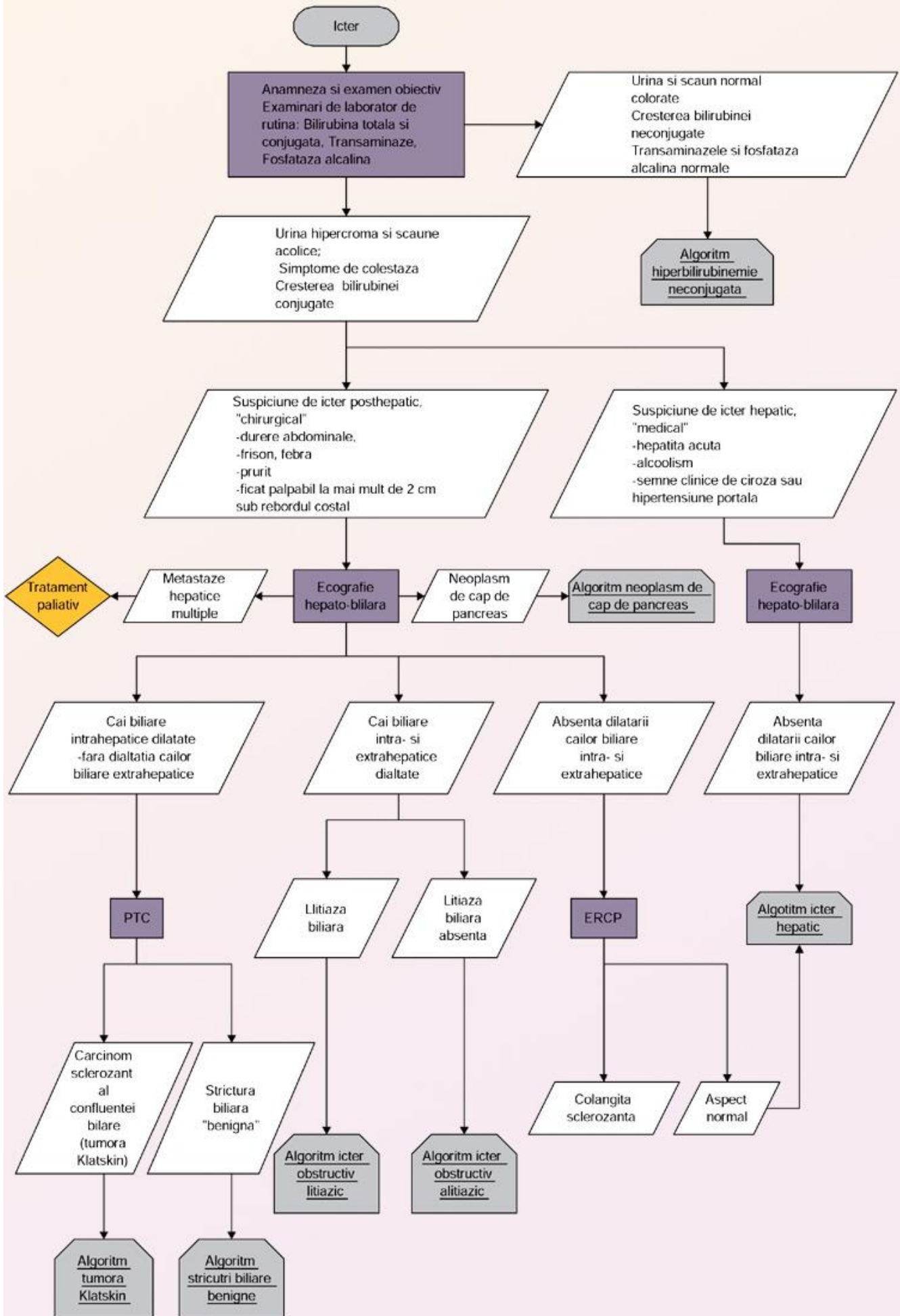


VEM = volum eritrocitar mediu

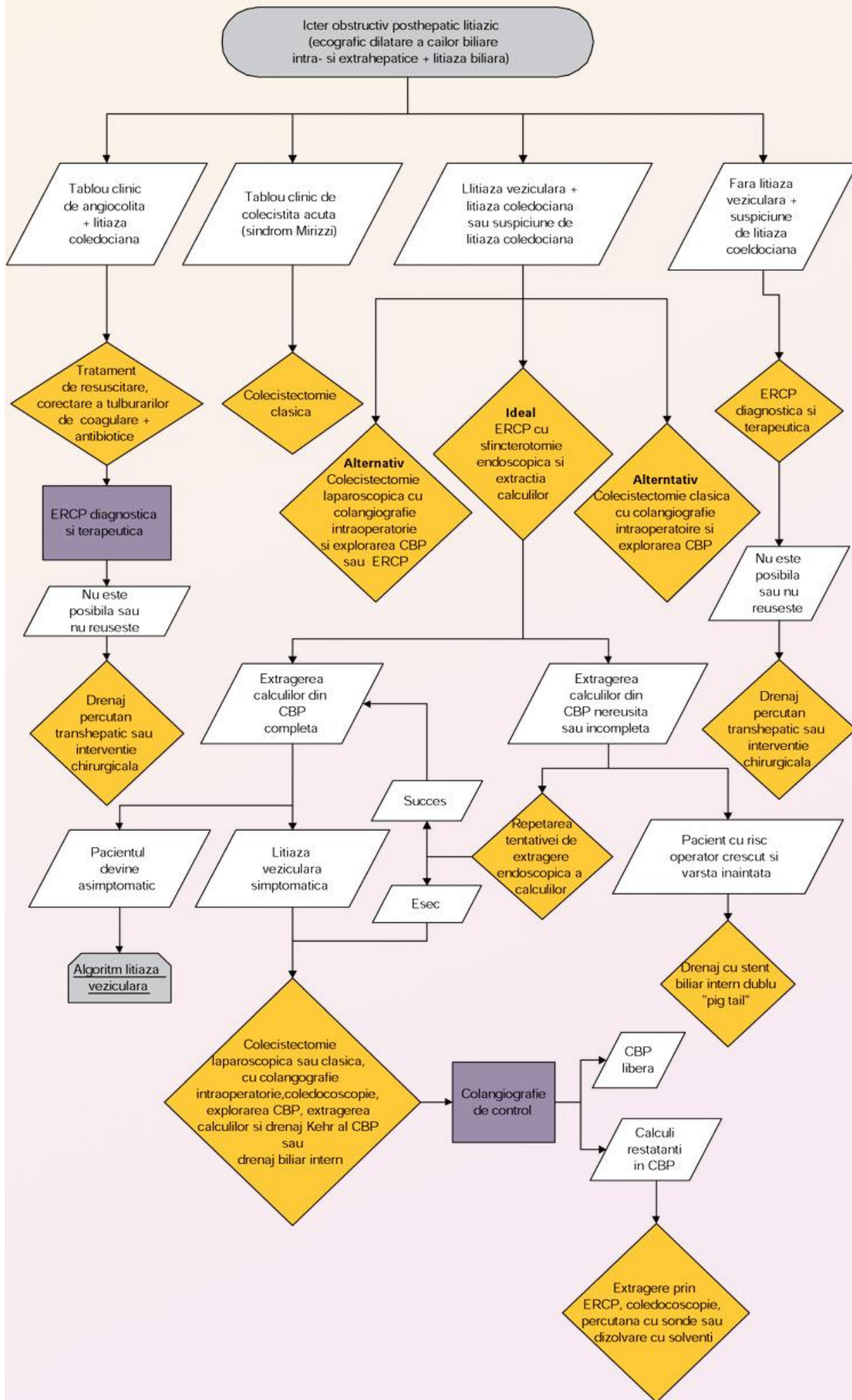
G-6-PD = glucoza-6-fosfatdehidrogenaza

CID = coagulare intravasculara diseminata

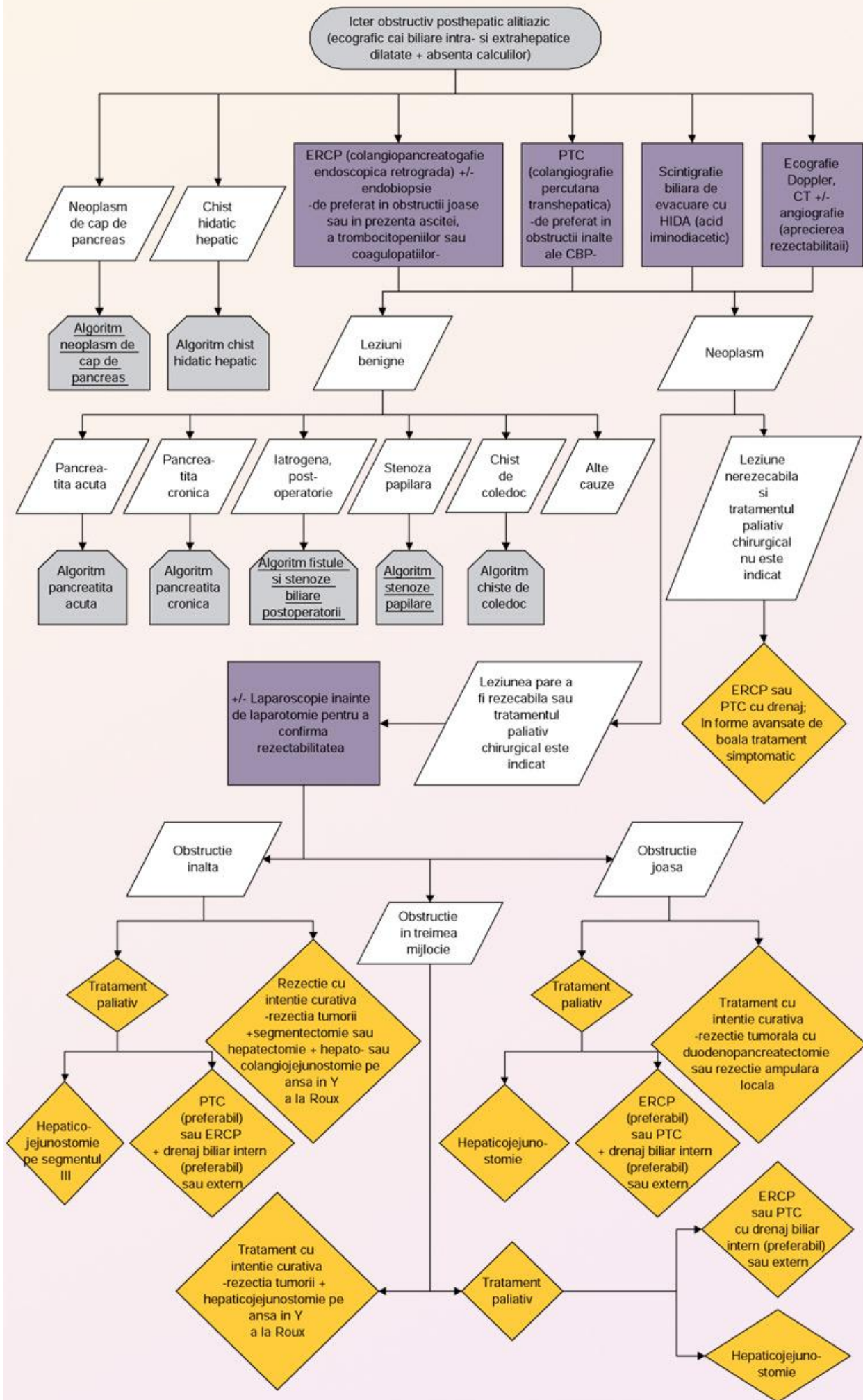
(057-A) Icterul sclerotegegmentar -Evaluare initiala.



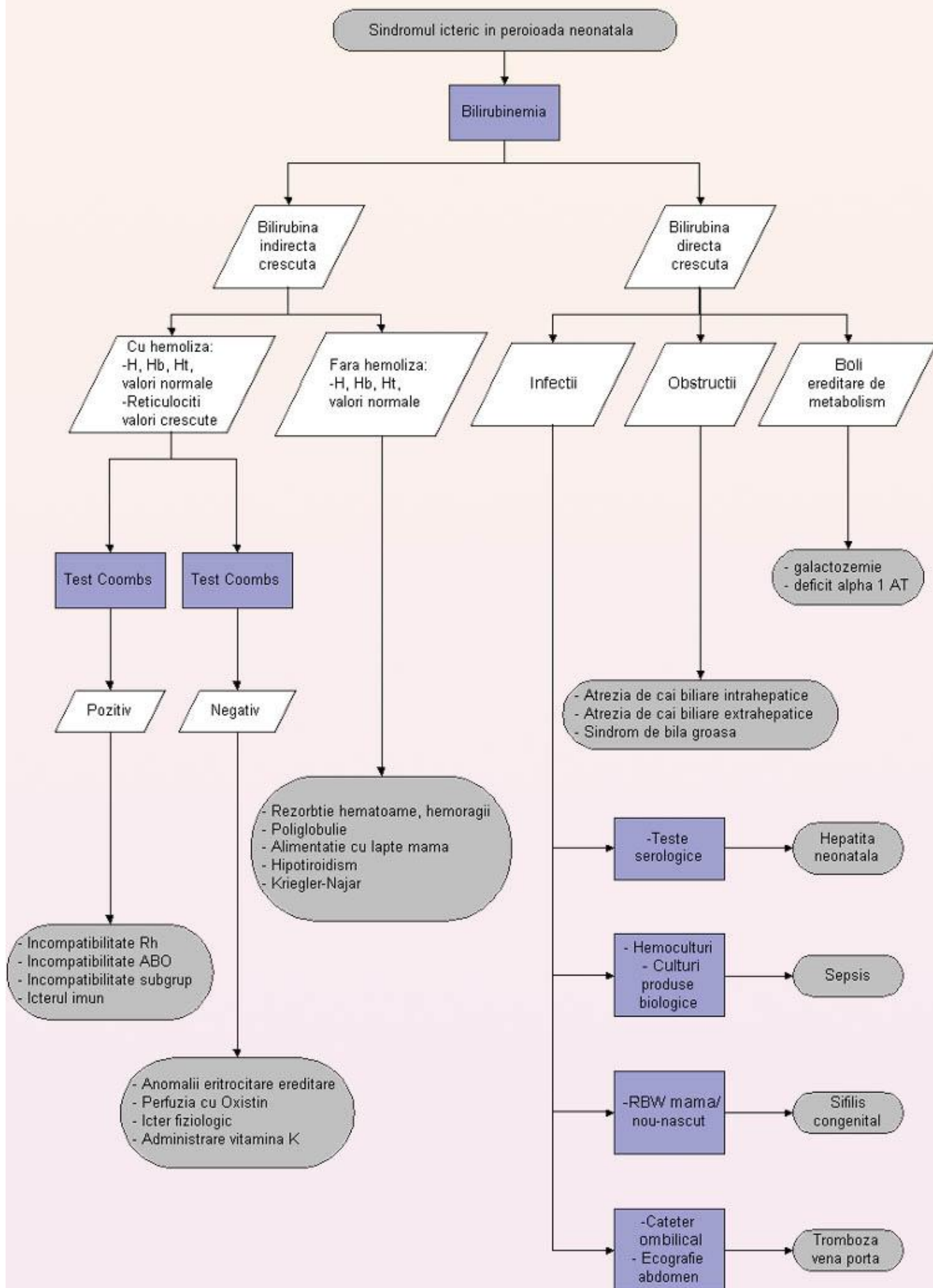
(057-B) Icter obstructiv posthepatic litiazic.



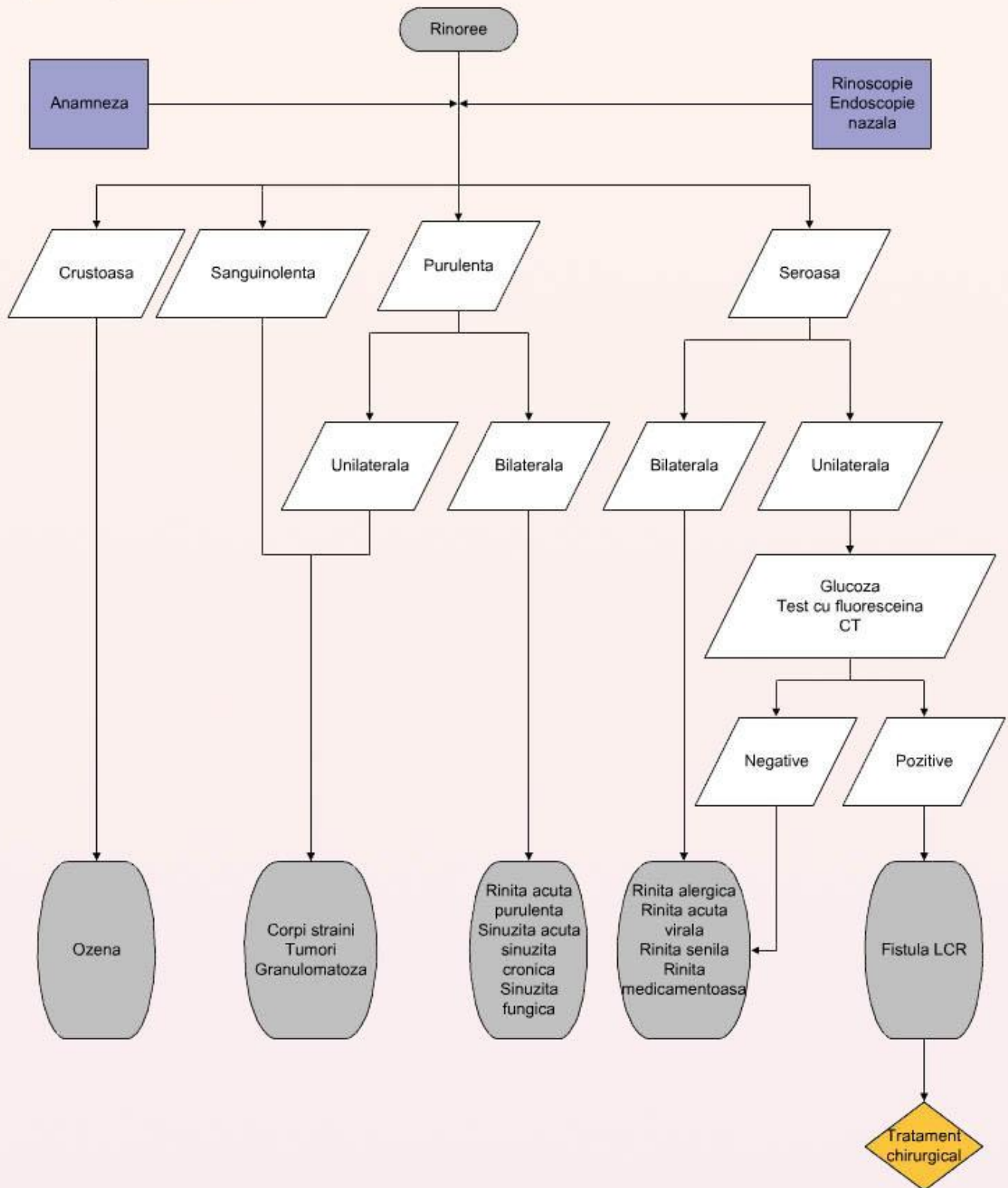
(057-C) Icterus obstructiv posthepatic alitiatic.



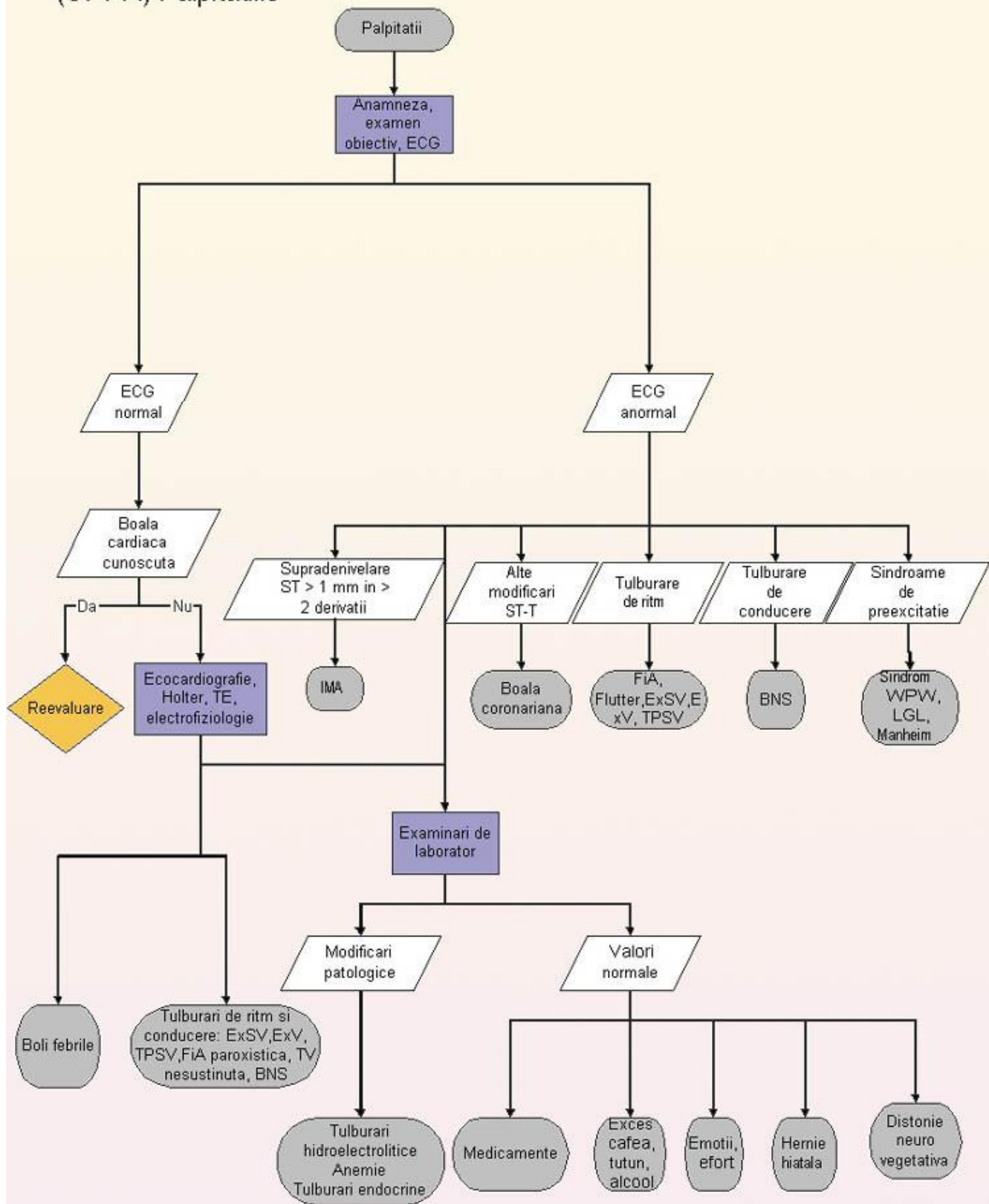
(057-F) Sindromul icteric in perioada neonatala



(091-A) Rinoreea

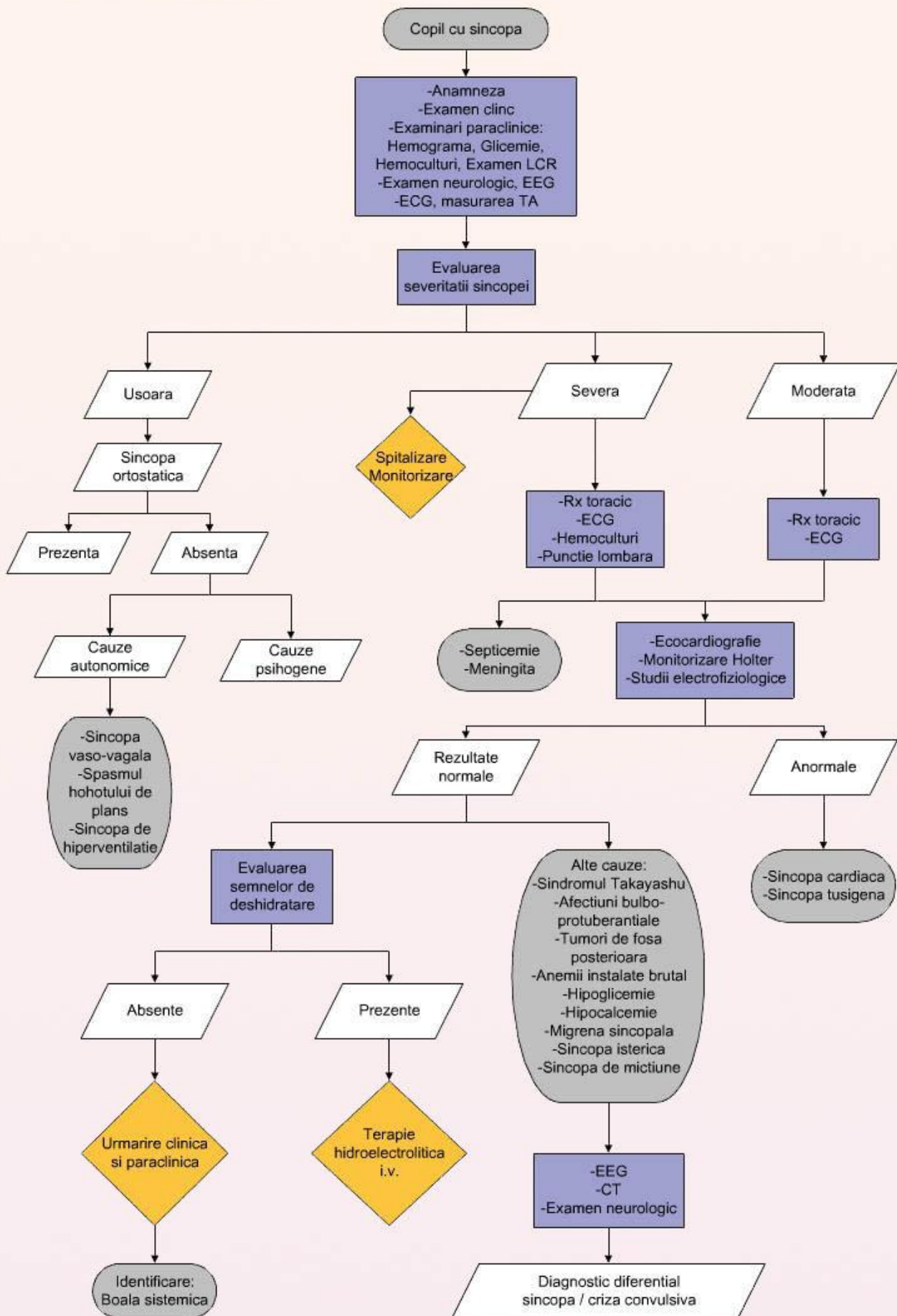


(071-A) Palpitiile

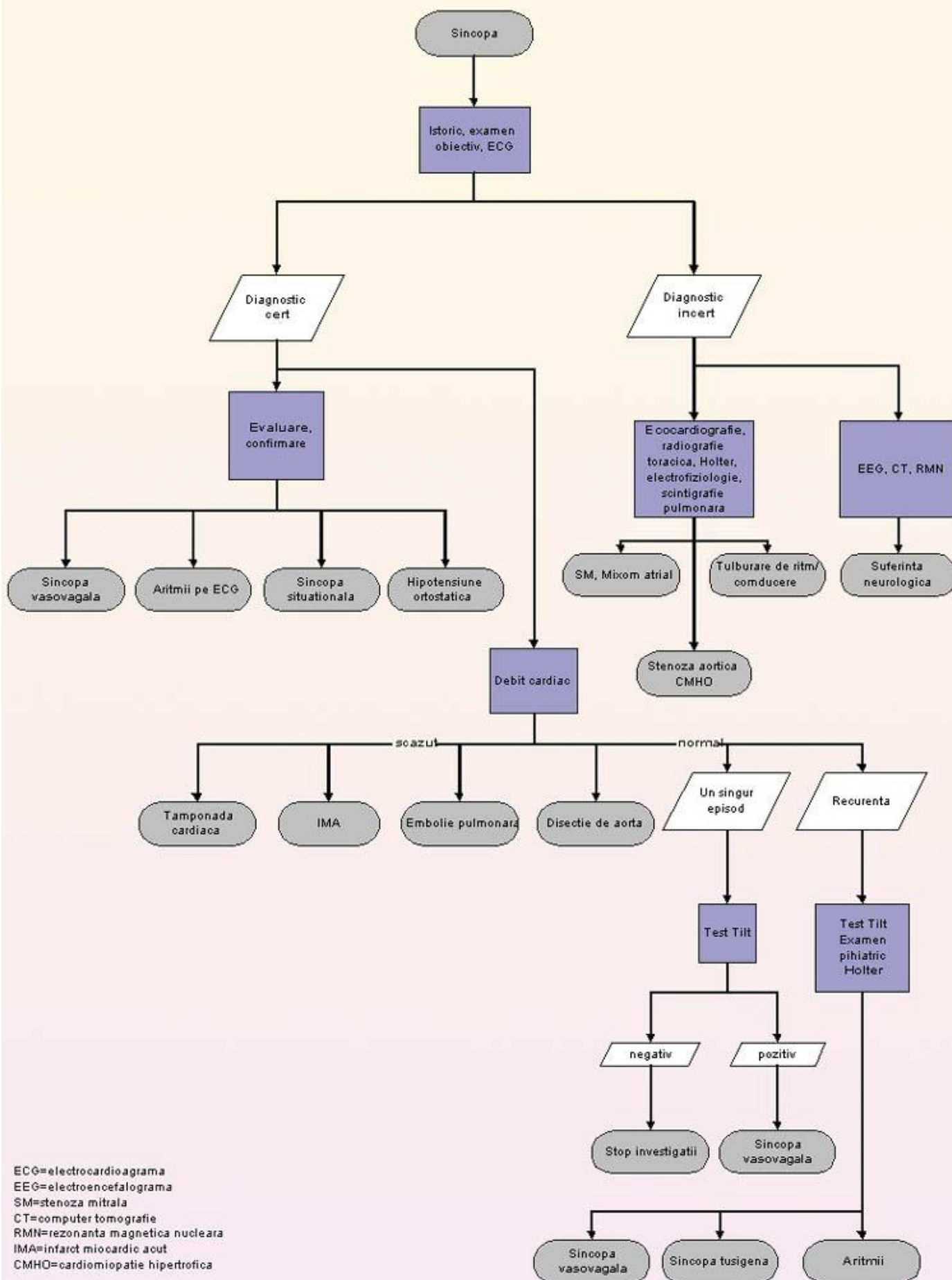


TE=teste de efort
IMA=infarct miocardic acut
ExV=extrasistole ventriculare
ExSV=extrasistole supraventriculare
TPSV=tahicardie paroxistica supraventriculara
TV=tahicardie ventriculara
BNS=boala de nod sinusal
WPW=sindrom Wolf Parkinson White
LGL=long Ganong Levine
FiA=fibrilatie atriala
ECG=electrocardiograma

(107-A) Sincopa la copil

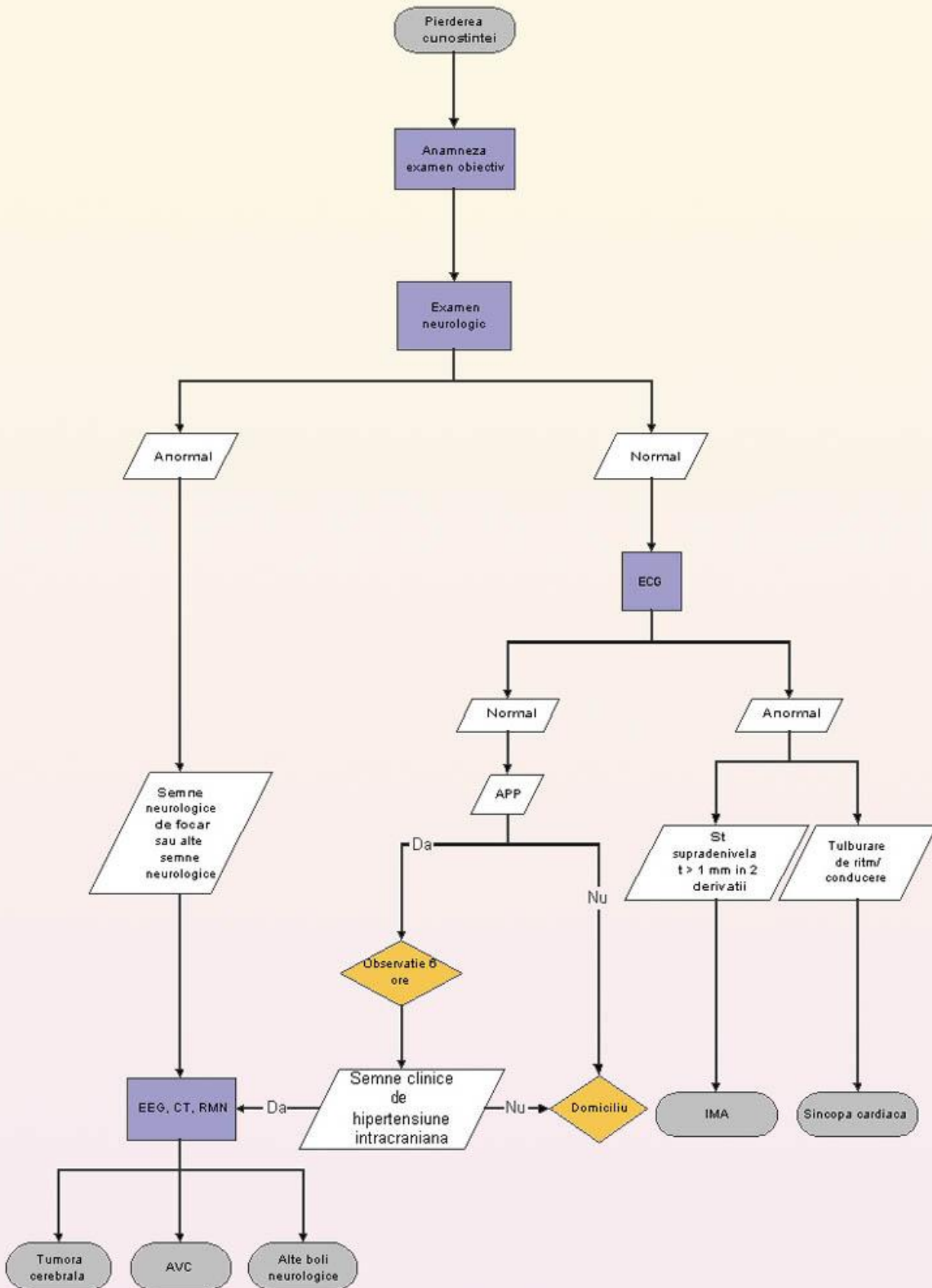


(107-B) Sincopa



ECG=electrocardiograma
EEG=electroencefalograma
SM=stenoza mitrala
CT=computer tomografie
RMN=rezonanta magnetica nucleara
IMA=infarct miocardic acut
CMHO=cardiomiopatie hipertrofica

(107-C) Pierderea cunostintei



HIC=hipertensiune intracraniana
AVC=accident vascular cerebral
IMA=infarct miocardic acut
EEG=electroencefalograma
ECG=electrocardiograma
CT=computer tomografie
RMN=rezonanta magnetica nucleara
APP=antecedente personale patologice

(015-A) Tratamentul de urgenta in hemoragia acuta.

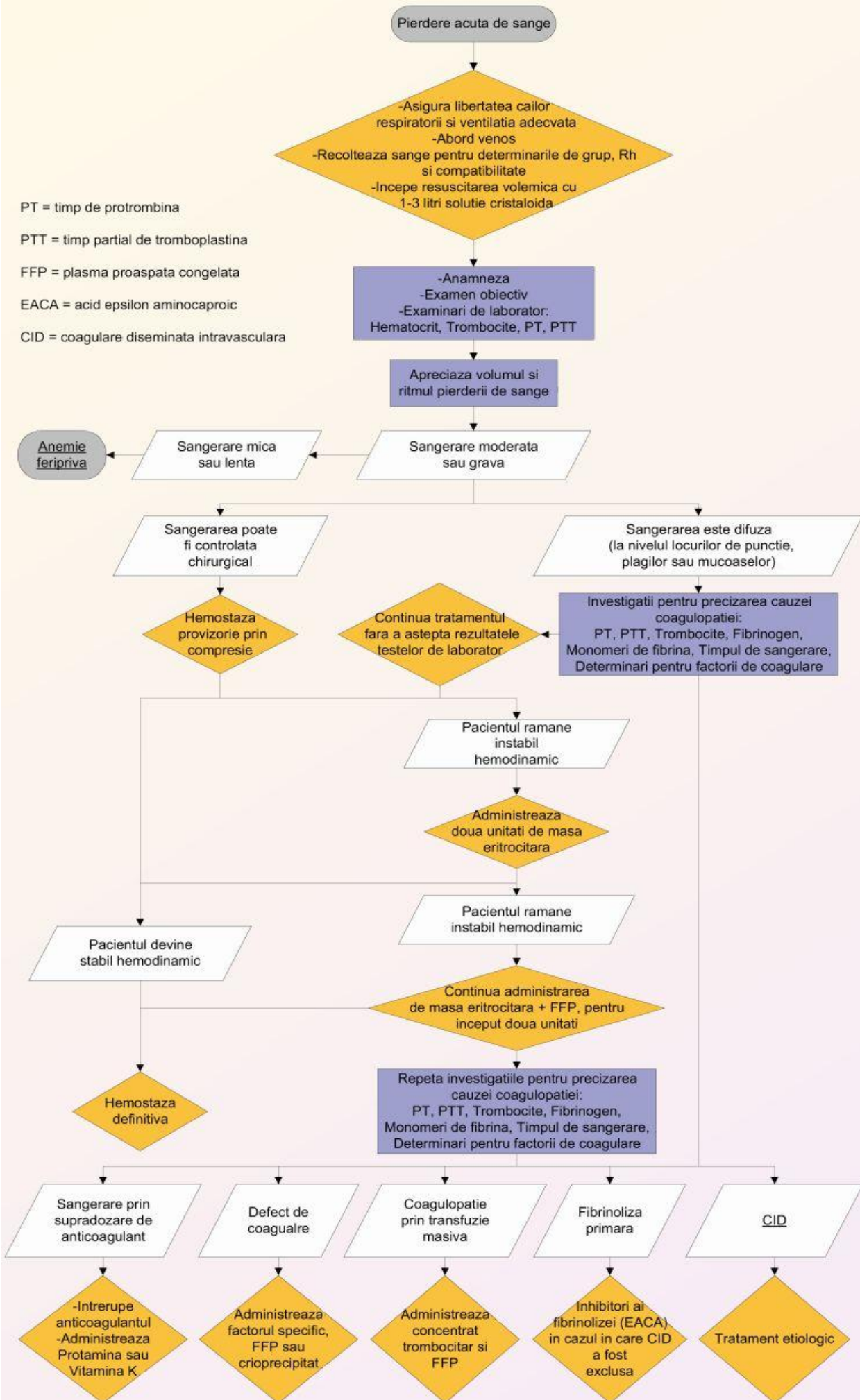
PT = timp de protrombina

PTT = timp partial de tromboplastina

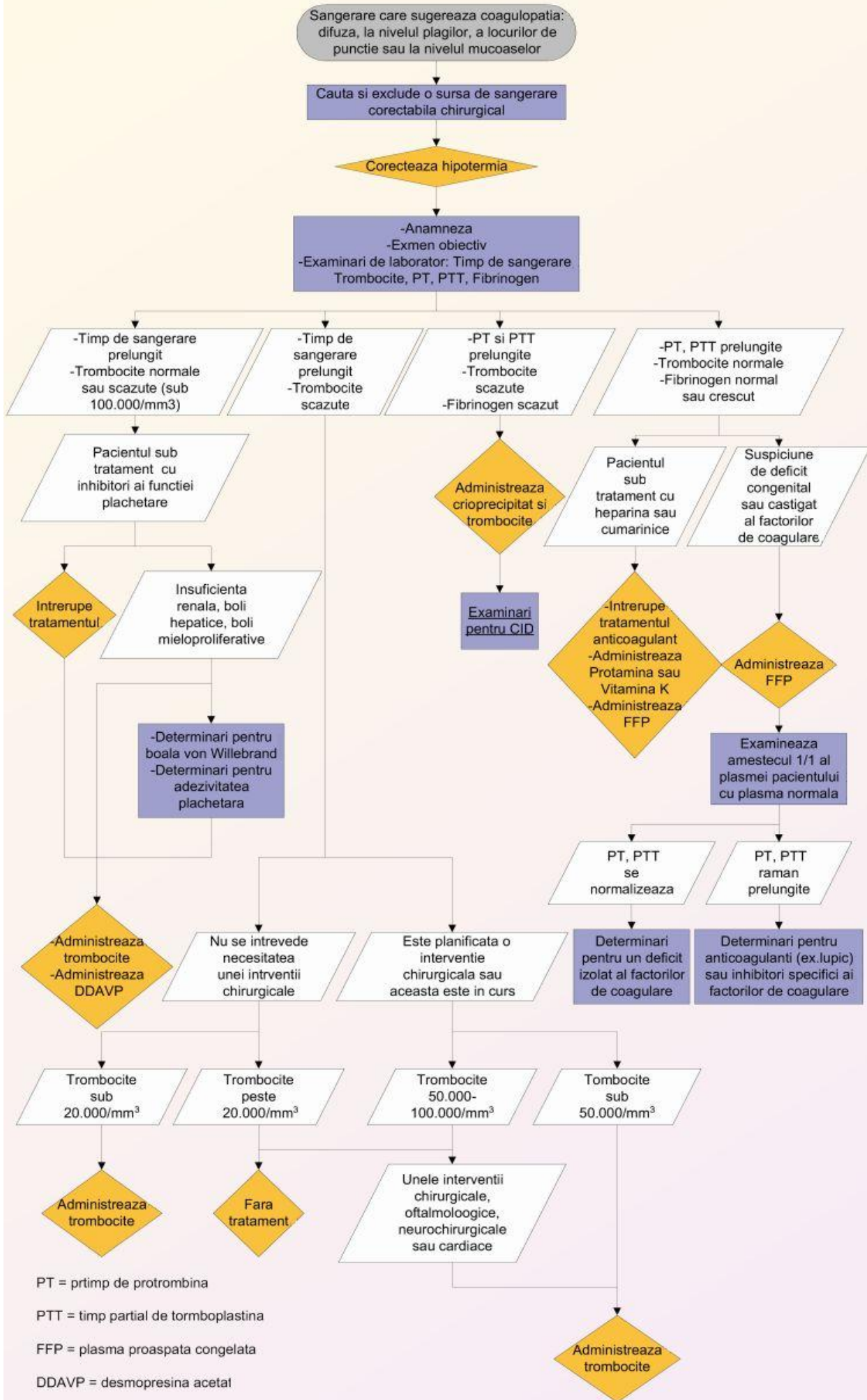
FFP = plasma proaspata congelata

EACA = acid epsilon aminocaproic

CID = coagulare diseminata intravasculara



(015-B) Diagnosticul si tratamentul coagulopatiilor.



PT = pr timp de protrombina

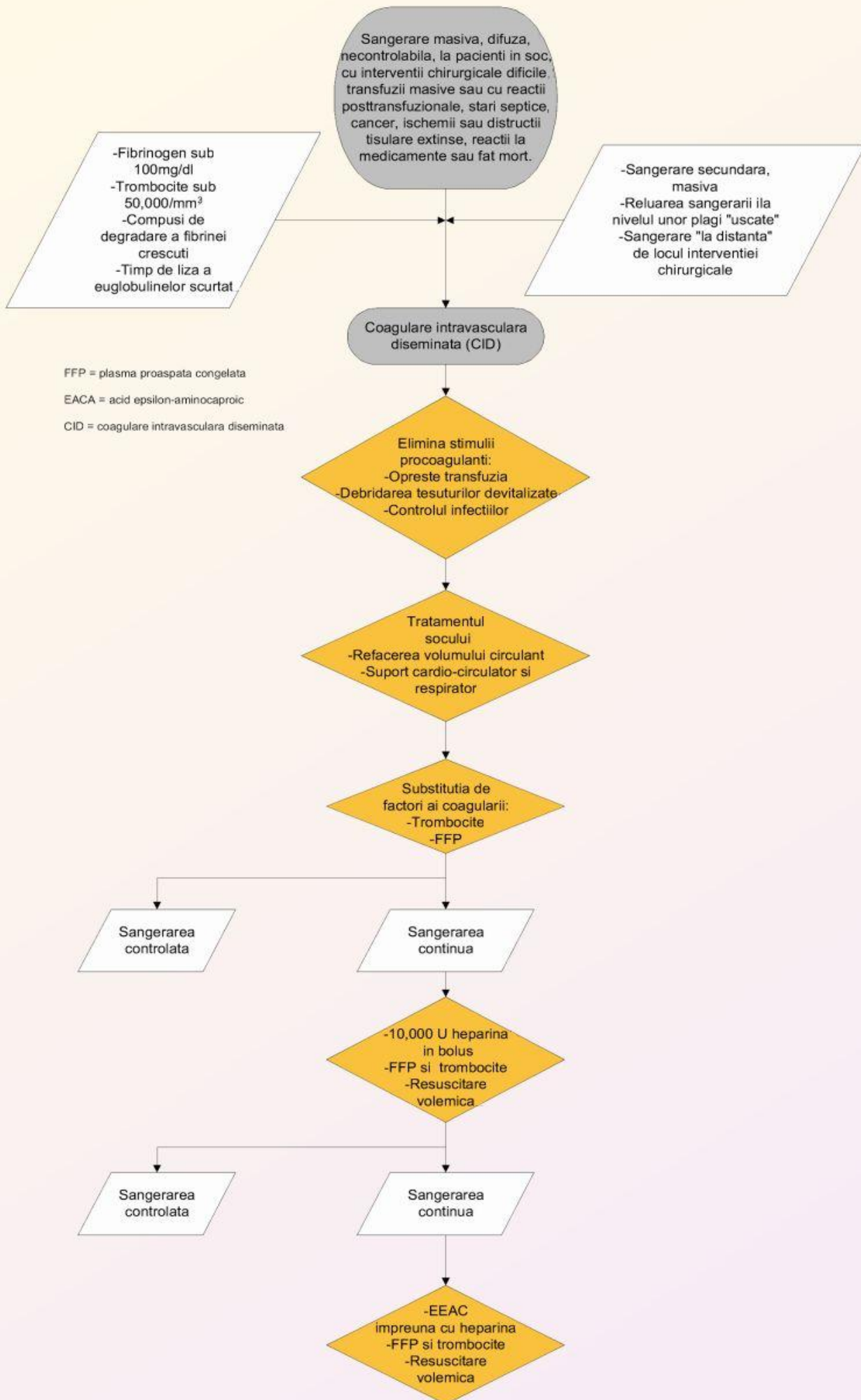
PTT = timp partial de tromboplastina

FFP = plasma proaspata congelata

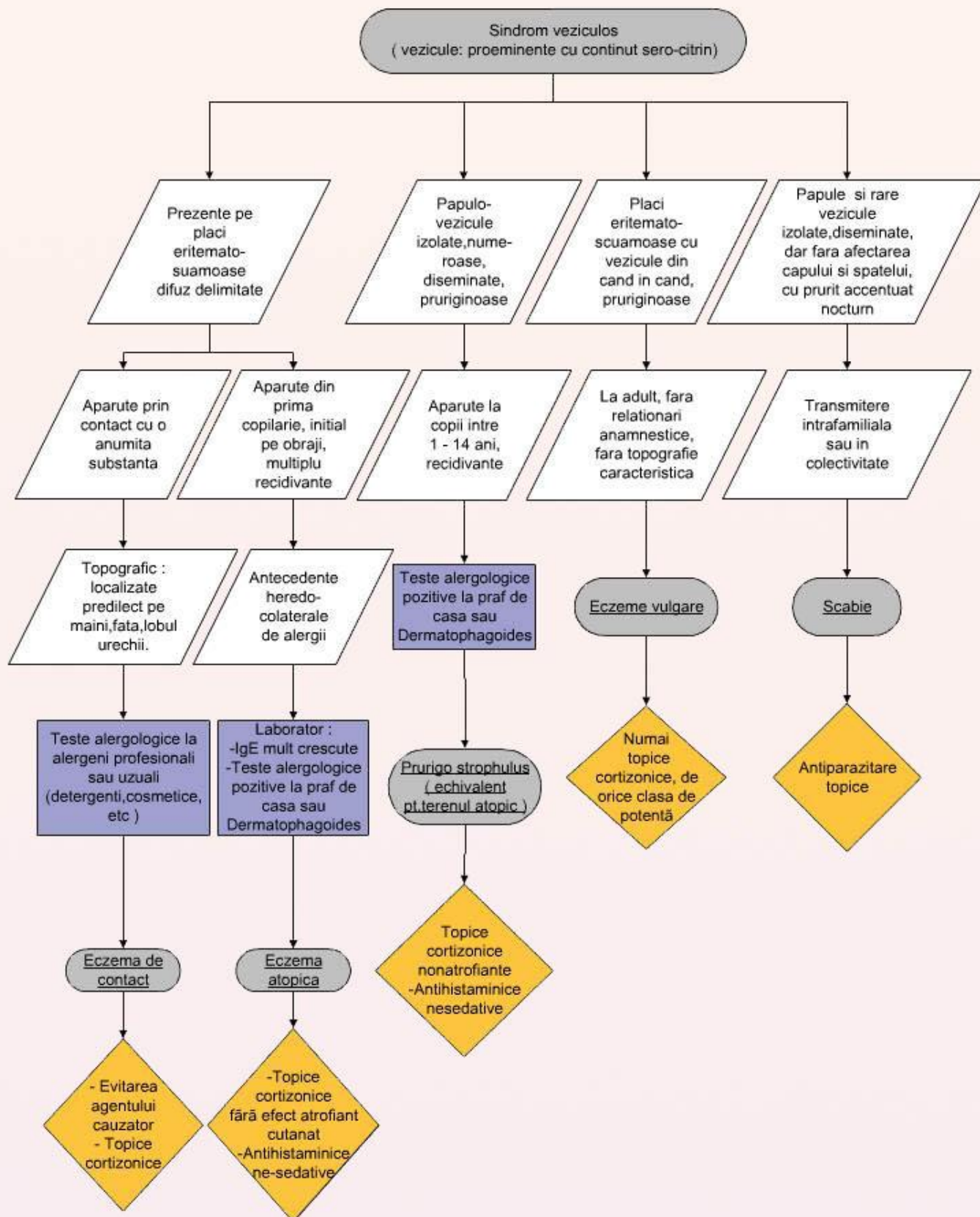
DDAVP = desmopresina acetat

CID = coagulare intravasculara diseminata

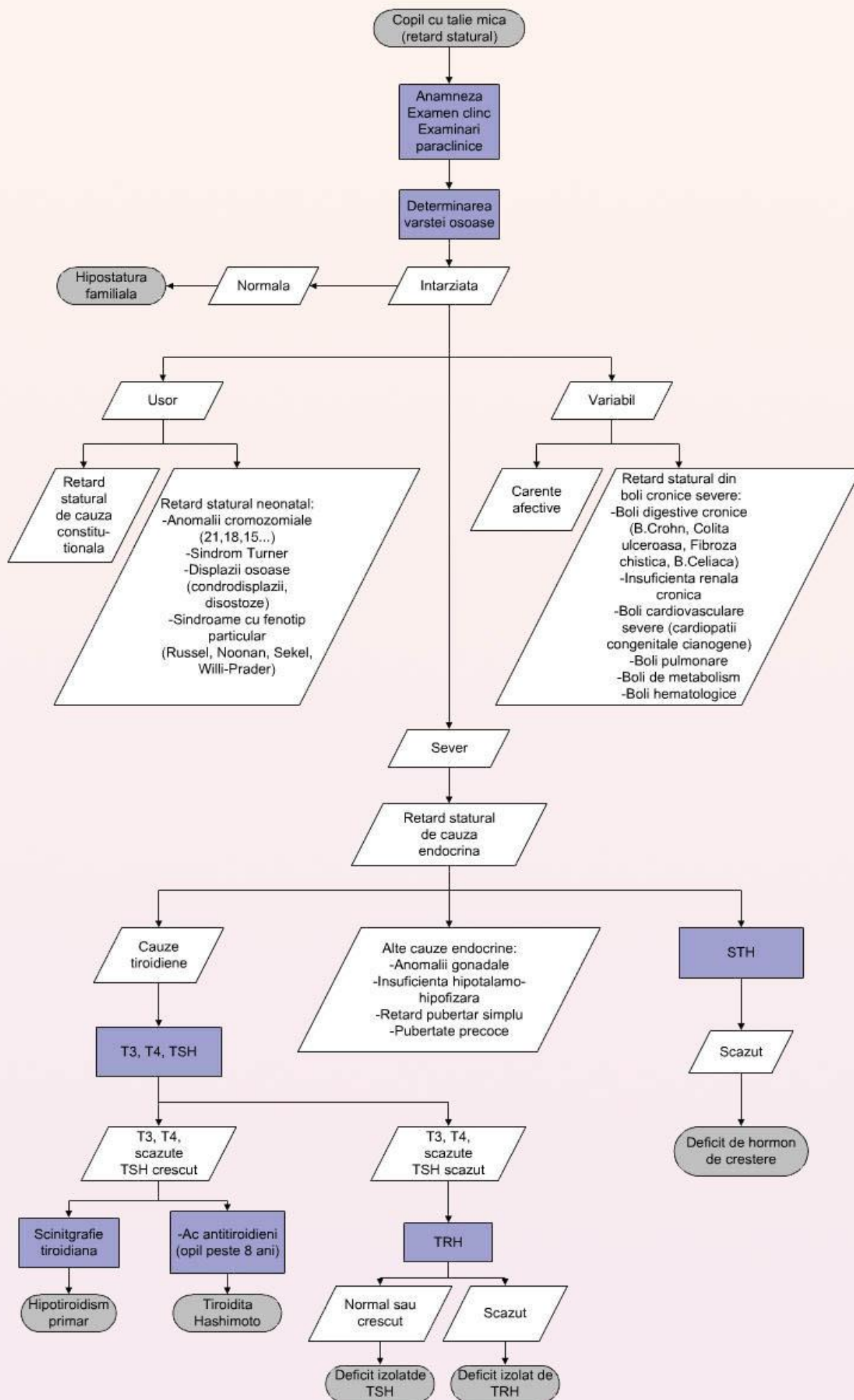
(015-F) Tratamentul coagulării diseminate intravasculare.



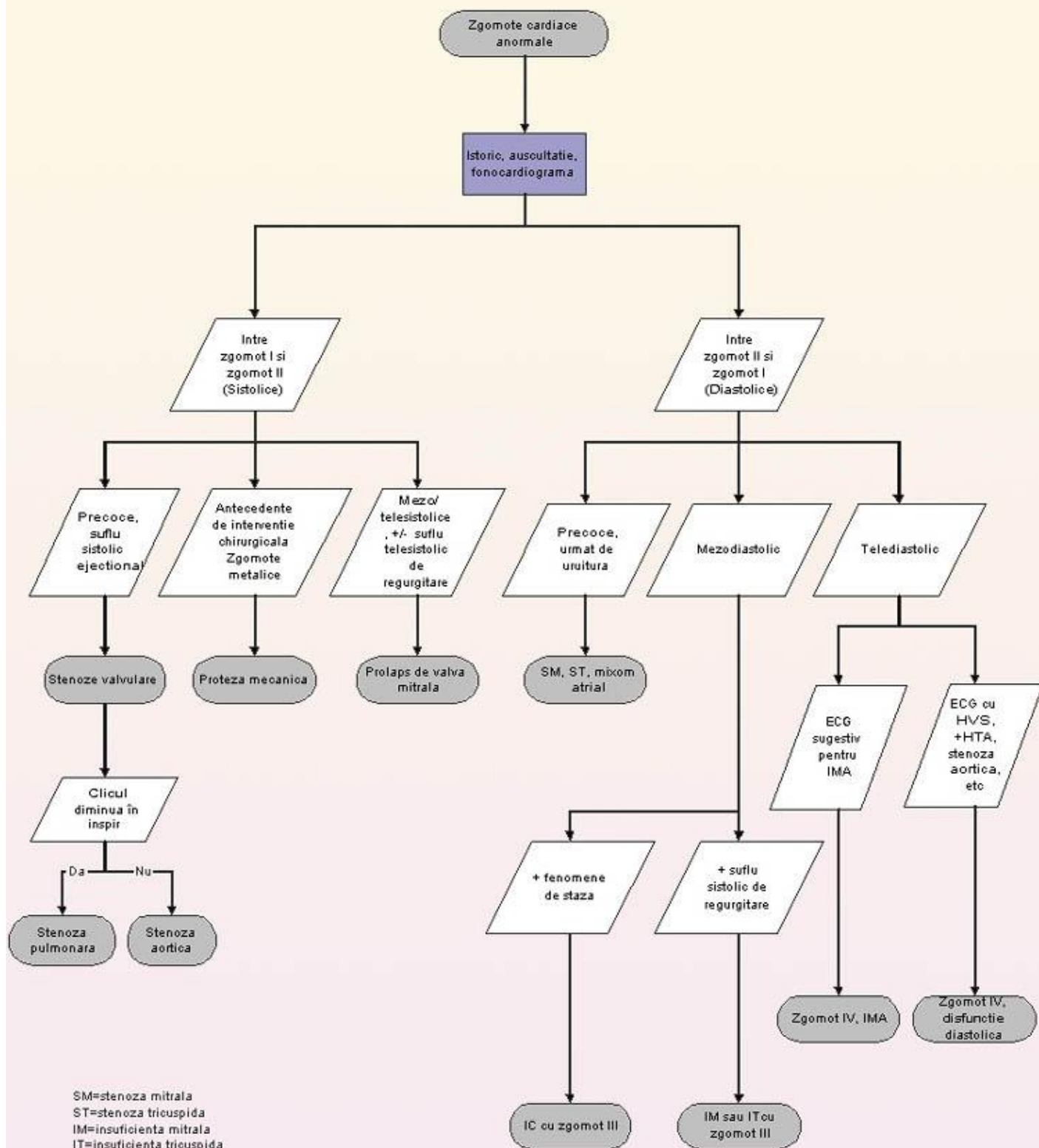
(100-C) Vezicule cutanate -Diagnostic si tratament.



(026-A) Copilul cu retard statural



(066-A) Zgomotele cardiace anormale



SM=stenoza mitrala
 ST=stenoza tricuspida
 IM=insuficienta mitrala
 IT=insuficienta tricuspida
 IC=insuficienta cardiaca
 IMA=infarct miocardic acut
 ECG=electrocardiograma

(066-B) Suflurile cardiace

